

Product datasheet for **AP20537PU-N**

RSK4 (RPS6KA6) Rabbit Polyclonal Antibody

Product data:

Product Type:	Primary Antibodies
Applications:	IF, IHC, WB
Recommended Dilution:	Western blot: 1/500 - 1/1000. Immunohistochemistry on paraffin sections 1/50 - 1/200.
Reactivity:	Human
Host:	Rabbit
Clonality:	Polyclonal
Specificity:	This antibody detects endogenous levels of Rsk-4 protein. (region surrounding Gln688)
Formulation:	Phosphate buffered saline (PBS), pH 7.2. State: Aff - Purified State: Liquid purified Ig fraction Preservative: 0.05% sodium azide
Concentration:	1.0 mg/ml
Purification:	Affinity chromatography (> 95% (by SDS-PAGE)
Conjugation:	Unconjugated
Storage:	Store undiluted at 2-8°C for one month or (in aliquots) at -20°C for longer. Avoid repeated freezing and thawing.
Stability:	Shelf life: one year from despatch.
Predicted Protein Size:	~ 84 kDa
Gene Name:	ribosomal protein S6 kinase A6
Database Link:	Entrez Gene 27330 Human Q9UK32



[View online »](#)

Background:

The family of ribosomal S6 kinases (Rsk), designated Rsk-1 (MAPKAP kinase-1), Rsk-2 and Rsk-3, are intracellular serine/threonine kinases that are important signaling intermediates in response to a broad range of ligand activated receptor tyrosine kinases. A unique feature common to the members of the Rsk family is that each possesses two non-identical complete kinase catalytic domains. An additional Rsk protein, Rsk-4, shows a high level of homology to the three previously isolated members of the human Rsk family. Rsk-4 is most abundantly expressed in brain and kidney and plays a role in normal neuronal development. The 70 kDa family of ribosomal S6 kinases includes p70 S6 kinase and p70 S6 kinase beta, which are thought to have similar regulatory functions. MSK1 (also designated RLPK) is a novel Rsk-related protein, which, like the p90 Rsk family members, contains two non-identical complete kinase catalytic domains.

Synonyms:

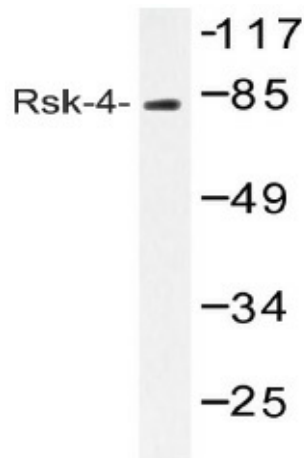
RSK-4, Ribosomal S6 kinase 4, S6K-alpha-6, p90RSK6, p90-RSK 6, pp90RSK4

Protein Families:

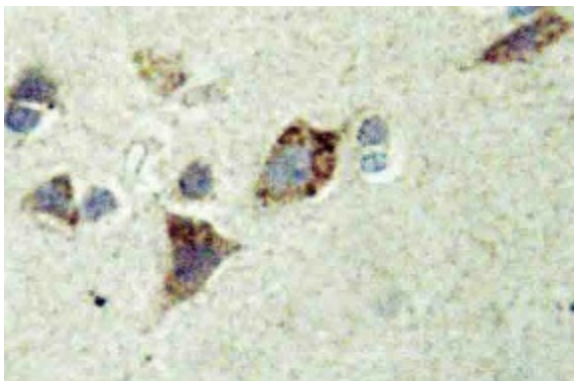
Druggable Genome, Protein Kinase

Protein Pathways:

Long-term potentiation, MAPK signaling pathway, mTOR signaling pathway, Neurotrophin signaling pathway, Oocyte meiosis, Progesterone-mediated oocyte maturation

Product images:

Western blot (WB) analysis of Rsk-4 antibody (Cat.-No.: AP20537PU-N) in extracts from K562 cells.



Immunohistochemistry (IHC) analyzes of Rsk-4 antibody (Cat.-No.: AP20537PU-N) in paraffin-embedded human brain tissue.