

## Product datasheet for **AP20518PU-N**

### FES Rabbit Polyclonal Antibody

#### Product data:

Product Type:	Primary Antibodies
Applications:	IHC, WB
Recommended Dilution:	<b>Western blot:</b> 1/500 - 1/1000. <b>Immunohistochemistry on paraffin sections</b> 1/50 - 1/200.
Reactivity:	Human, Mouse
Host:	Rabbit
Clonality:	Polyclonal
Specificity:	This antibody detects endogenous levels of Fes protein. (region surrounding Lys161)
Formulation:	Phosphate buffered saline (PBS), pH 7.2. State: Aff - Purified State: Liquid purified Ig fraction Preservative: 0.05% sodium azide
Concentration:	1.0 mg/ml
Purification:	Affinity chromatography (> 95% (by SDS-PAGE)
Conjugation:	Unconjugated
Storage:	Store undiluted at 2-8°C for one month or (in aliquots) at -20°C for longer. Avoid repeated freezing and thawing.
Stability:	Shelf life: one year from despatch.
Predicted Protein Size:	~ 80 kDa
Gene Name:	FES proto-oncogene, tyrosine kinase
Database Link:	<a href="#">Entrez Gene 14159 Mouse</a> <a href="#">Entrez Gene 2242 Human</a> <a href="#">P07332</a>



[View online »](#)

**Background:**

FES is a protooncogene that encodes a protein-tyrosine kinase distinct from c-Src, c-Abl and other nonreceptor tyrosine kinases. FES was originally identified as the cellular homolog of several transforming retroviral oncoproteins. FES plays a role in regulating cytoskeletal rearrangements and inside out signalling that accompany receptor ligand, cell matrix and cell-cell interaction. Genetic analysis using transgenic mouse model implicate FES in the regulation of inflammation and innate immunity. FES modulates the innate immune response of macrophages to LPS challenge, in part, by regulating the internalization and down-regulation of the TLR4 receptor complex.

**Synonyms:**

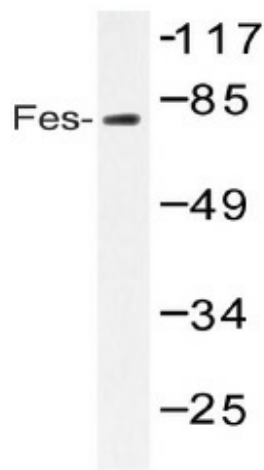
FES, FPS, Proto-oncogene c-Fps

**Protein Families:**

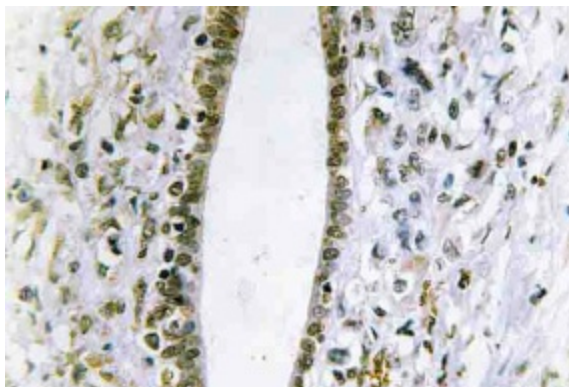
Druggable Genome, Protein Kinase

**Protein Pathways:**

Axon guidance

**Product images:**

Western blot (WB) analysis of Fes antibody (Cat.-No.: AP20518PU-N) in extracts from HUVEC serum 20



Immunohistochemistry (IHC) analyzes of Fes antibody (Cat.-No.: AP20518PU-N) in paraffin-embedded human liver carcinoma tissue.