

Product datasheet for **AP20284PU-N**

STAT5B Rabbit Polyclonal Antibody

Product data:

Product Type:	Primary Antibodies
Applications:	IHC, WB
Recommended Dilution:	Western blot: 1/500-1/1000. Immunohistochemistry on paraffin sections: 1/50-1/200.
Reactivity:	Human, Mouse, Rat
Host:	Rabbit
Clonality:	Polyclonal
Specificity:	This antibody detects endogenous levels of Stat5b protein.
Formulation:	Phosphate buffered saline (PBS) with 0.05% sodium azide, approx. pH 7.2 State: Aff - Purified State: Liquid purified Ig fraction
Concentration:	1.0 mg/ml
Purification:	Affinity-chromatography using epitope-specific immunogen; purity is > 95% (by SDS-PAGE)
Conjugation:	Unconjugated
Storage:	Store undiluted at 2-8°C for one month or (in aliquots) at -20°C for longer. Avoid repeated freezing and thawing.
Stability:	Shelf life: one year from despatch.
Predicted Protein Size:	~ 90 kDa
Gene Name:	signal transducer and activator of transcription 5B
Database Link:	Entrez Gene 20851 Mouse Entrez Gene 25126 Rat Entrez Gene 6777 Human P51692



[View online »](#)

Background:

Stat5a and Stat5b (signal transducer and activator of transcription 5a and 5b; 96% homology) undergo receptor tyrosine kinase or G protein-coupled receptor-dependent phosphorylation in response to cytokines or growth factors, and then form homo- or heterodimers that translocate to the nucleus where they initiate transcription. Activation of Stat5a via IL-2, IL-3, IL-7, GM-CSF, erythropoietin, thrombopoietin and growth hormones influences proliferation, differentiation and apoptosis in lymphohematopoietic cells. Phosphorylation of Stat5a at Ser 127/Ser 128 and Ser 779 are contingent on ErbB4-mediated activation of Stat5a. Activation of Stat5b via IL-2, IL-4, CSF1 and growth hormones influences TCR signaling, apoptosis, adult mammary gland development and sexual dimorphism of liver gene expression. Stat5b is the major liver-expressed Stat5 form that has been shown to fuse with retinoic acid receptor- α gene in acute promyelocytic leukemias (APLL). Stat5a/b null mice have severely impaired lymphoid development and differentiation.

Synonyms:

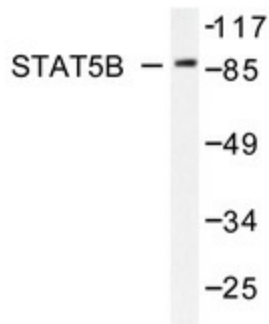
STAT-5B

Protein Families:

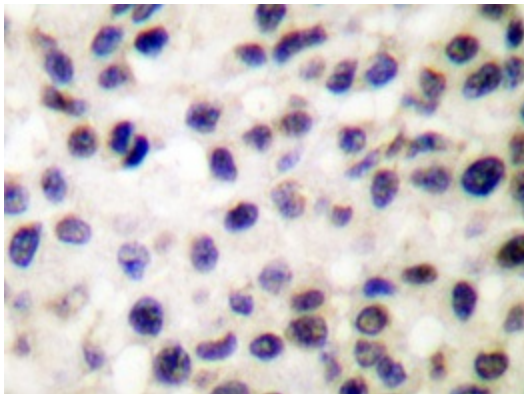
Druggable Genome, ES Cell Differentiation/IPS, Stem cell relevant signaling - JAK/STAT signaling pathway, Transcription Factors

Protein Pathways:

Acute myeloid leukemia, Chemokine signaling pathway, Chronic myeloid leukemia, ErbB signaling pathway, Jak-STAT signaling pathway, Pathways in cancer

Product images:

Western blot analysis of Stat5b antibody (AP20284PU-N) in extracts from HeLa cells.



Immunohistochemistry analyzes of Stat5b antibody (AP20284PU-N) in paraffin-embedded human colon carcinoma tissue.