

## Product datasheet for **AP20264PU-N**

### PLK1 Rabbit Polyclonal Antibody

#### Product data:

Product Type:	Primary Antibodies
Applications:	IF, IHC, WB
Recommended Dilution:	<b>Western blot:</b> 1/500-1/1000. <b>Immunohistochemistry on paraffin sections:</b> 1/50-1/200. <b>Immunofluorescence:</b> 1/50-1/200.
Reactivity:	Human, Mouse, Rat
Host:	Rabbit
Clonality:	Polyclonal
Specificity:	This antibody detects endogenous levels of PLK1 protein.
Formulation:	Phosphate buffered saline (PBS) with 0.05% sodium azide, approx. pH 7.2 State: Aff - Purified State: Liquid purified Ig fraction
Concentration:	1.0 mg/ml
Purification:	Affinity-chromatography using epitope-specific immunogen; purity is > 95% (by SDS-PAGE)
Conjugation:	Unconjugated
Storage:	Store undiluted at 2-8°C for one month or (in aliquots) at -20°C for longer. Avoid repeated freezing and thawing.
Stability:	Shelf life: one year from despatch.
Predicted Protein Size:	~ 70 kDa
Gene Name:	polo like kinase 1
Database Link:	<a href="#">Entrez Gene 18817 Mouse</a> <a href="#">Entrez Gene 25515 Rat</a> <a href="#">Entrez Gene 5347 Human</a> <a href="#">P53350</a>



[View online »](#)

**Background:**

PLK1 (polo-like kinase 1) is a member of the serine/threonine protein kinase family, cdc5/polo subfamily. PLK1 contains two polo box domains with a predicted molecular weight of 68 kDa. PLK1 has been shown to regulate cdc2/cyclin B through phosphorylation and activation of cdc25c phosphatase. PLK1 is modified by phosphorylation at Threonine 210. PLK1 may also be required for cell division. Depletion of PLK1 results in apoptosis and deregulation of expression of PKL1 is correlated with development of many malignancies. Studies have shown that ab14209 preferentially detects the kinetochore-associated pool of Plk1. An alternative antibody, Mouse monoclonal to Plk1 (ab14210) preferentially stains centrosomal-associated Plk1.

**Synonyms:**

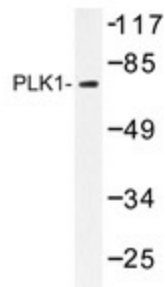
Polo-like kinase 1, PLK-1, STPK13

**Protein Families:**

Druggable Genome, Protein Kinase

**Protein Pathways:**

Cell cycle, Oocyte meiosis, Progesterone-mediated oocyte maturation

**Product images:**

Western blot analysis of PLK1 antibody (AP20264PU-N) in extracts from 293 cells.