

## Product datasheet for **AP20249PU-N**

### IL2 Receptor beta (IL2RB) Rabbit Polyclonal Antibody

#### Product data:

Product Type:	Primary Antibodies
Applications:	IHC, WB
Recommended Dilution:	<b>Western blot:</b> 1/500-1/1000. <b>Immunohistochemistry on paraffin sections:</b> 1/50-1/200.
Reactivity:	Human, Mouse, Rat
Host:	Rabbit
Clonality:	Polyclonal
Specificity:	This antibody detects endogenous levels of IL-2R $\beta$ protein.
Formulation:	Phosphate buffered saline (PBS) with 15 mM sodium azide, approx. pH 7.2 State: Aff - Purified State: Liquid purified Ig fraction
Concentration:	1.0 mg/ml
Purification:	Affinity-chromatography using epitope-specific immunogen; purity is > 95% (by SDS-PAGE)
Conjugation:	Unconjugated
Storage:	Store undiluted at 2-8 °C for one month or (in aliquots) at -20 °C for longer. Avoid repeated freezing and thawing.
Stability:	Shelf life: one year from despatch.
Predicted Protein Size:	~ 60 kDa
Gene Name:	interleukin 2 receptor subunit beta
Database Link:	<a href="#">Entrez Gene 16185 Mouse</a> <a href="#">Entrez Gene 25746 Rat</a> <a href="#">Entrez Gene 3560 Human P14784</a>
Background:	The Interleukin 2 Receptor alpha and beta chains, together with the common gamma chain, constitute the high affinity IL2 receptor present on activated T and B cells, thymocyte subset, pre B cells and T regulatory cells. Homodimeric alpha chains result in low affinity receptor, while homodimeric beta chains produce a medium affinity receptor. Normally an integral membrane protein, soluble IL2 Receptor alpha has been isolated and determined to result from extracellular proteolysis. Alternately spliced IL2 Receptor alpha mRNAs have been isolated, but the significance of each is presently unknown.



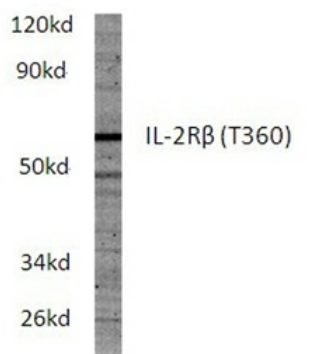
[View online »](#)

**Synonyms:** Interleukin-2 receptor subunit beta, IL-2 receptor subunit beta, IL2 Receptor beta, P70-75

**Protein Families:** Druggable Genome, Transmembrane

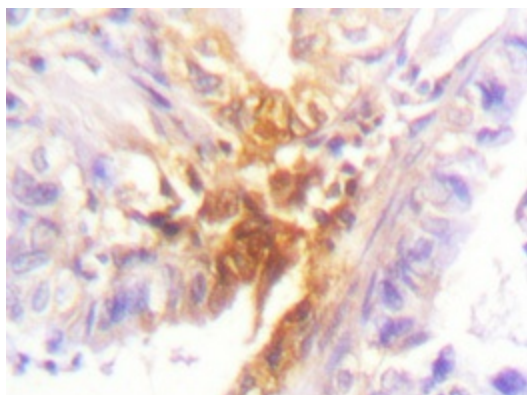
**Protein Pathways:** Cytokine-cytokine receptor interaction, Endocytosis, Jak-STAT signaling pathway

**Product images:**



PC12 whole cell lysate  
IL-2Rβ (T360) pAb at 1:500 dilution

Western blot (WB) analysis of IL-2Rβ antibody (Cat.-No.: AP20249PU-N) in extracts from PC12 cells.



Immunohistochemistry analyzes of IL-2Rβ antibody (AP20249PU-N) in paraffin-embedded human lung carcinoma tissue.