

Product datasheet for **AP18137PU-N**

NLRP3 (N-term) Rabbit Polyclonal Antibody

Product data:

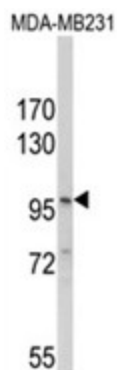
Product Type:	Primary Antibodies
Applications:	WB
Recommended Dilution:	ELISA: 1/1,000. Western blotting: 1/100 - 1/500.
Reactivity:	Human
Host:	Rabbit
Clonality:	Polyclonal
Immunogen:	KLH conjugated synthetic peptide selected from the N-terminal region of human NLRP3
Specificity:	This antibody reacts to NALP3.
Formulation:	PBS with 0.09% (W/V) sodium azide State: Liquid purified Ig
Concentration:	lot specific
Purification:	Affinity chromatography on Protein A
Conjugation:	Unconjugated
Storage:	Store the antibody undiluted at 2-8°C for one month or (in aliquots) at -20°C for longer. Avoid repeated freezing and thawing.
Stability:	Shelf life: one year from despatch.
Gene Name:	NLR family, pyrin domain containing 3
Database Link:	Entrez Gene 114548 Human Q96P20
Background:	NLRP3 is a pyrin-like protein containing a pyrin domain, a nucleotide-binding site (NBS) domain, and a leucine-rich repeat (LRR) motif. This protein interacts with the apoptosis-associated speck-like protein PYCARD/ASC, which contains a caspase recruitment domain, and is a member of the NALP3 inflammasome complex. This complex functions as an upstream activator of NF-kappaB signaling, and it plays a role in the regulation of inflammation, the immune response, and apoptosis.
Synonyms:	NLRP3, C1orf7, CIAS1, PYPAF1
Protein Families:	Druggable Genome



[View online »](#)

Protein Pathways: NOD-like receptor signaling pathway

Product images:



Western blot analysis of NLRP3 Antibody (N-term) in MDA-MB231 cell line lysates (35ug/lane). NLRP3 (arrow) was detected using the purified Pab.