

Product datasheet for **AP17826PU-N**

Von Hippel Lindau (VHL) (C-term) Rabbit Polyclonal Antibody

Product data:

Product Type:	Primary Antibodies
Applications:	WB
Recommended Dilution:	ELISA: 1/1,000. Western blotting: 1/50 - 1/100.
Reactivity:	Human
Host:	Rabbit
Clonality:	Polyclonal
Immunogen:	KLH conjugated synthetic peptide selected from the C-terminal region of human VHL
Specificity:	This antibody reacts to VHL.
Formulation:	PBS with 0.09% (W/V) sodium azide State: Liquid purified Ig
Concentration:	lot specific
Purification:	Saturated Ammonium Sulfate (SAS) precipitation
Conjugation:	Unconjugated
Storage:	Store the antibody undiluted at 2-8°C for one month or (in aliquots) at -20°C for longer. Avoid repeated freezing and thawing.
Stability:	Shelf life: one year from despatch.
Gene Name:	von Hippel-Lindau tumor suppressor
Database Link:	Entrez Gene 7428 Human P40337
Background:	Von Hippel-Lindau syndrome (VHL) is a dominantly inherited familial cancer syndrome predisposing to a variety of malignant and benign tumors. A germline mutation of VHL gene is the basis of familial inheritance of VHL syndrome. The protein is a component of the protein complex that includes elongin B, elongin C, and cullin-2, and possesses ubiquitin ligase E3 activity. This protein is involved in the ubiquitination and degradation of hypoxia-inducible-factor (HIF), which is a transcription factor that plays a central role in the regulation of gene expression by oxygen. RNA polymerase II subunit POLR2G/RPB7 is also reported to be a target of this protein.



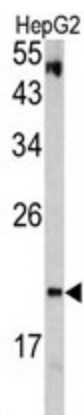
[View online »](#)

Synonyms: Von Hippel-Lindau disease tumor suppressor

Protein Families: Druggable Genome, Transcription Factors

Protein Pathways: Pathways in cancer, Renal cell carcinoma, Ubiquitin mediated proteolysis

Product images:



Western blot analysis of VHL antibody (C-term) in HepG2 cell line lysates (35ug/lane). VHL (arrow) was detected using the purified Pab.