

Product datasheet for **AP17492PU-N**

IFNGR2 (C-term) Rabbit Polyclonal Antibody

Product data:

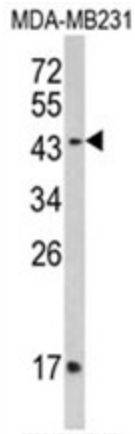
Product Type:	Primary Antibodies
Applications:	IHC, WB
Recommended Dilution:	ELISA: 1/1,000. Western blotting: 1/100 - 1/500. Immunohistochemistry on paraffin sections.
Reactivity:	Human
Host:	Rabbit
Clonality:	Polyclonal
Immunogen:	KLH conjugated synthetic peptide selected from the C-terminal region of human IFNGR2
Specificity:	This antibody reacts to IFNGR2.
Formulation:	PBS with 0.09% (W/V) sodium azide State: Liquid purified Ig
Concentration:	lot specific
Purification:	Affinity chromatography on Protein A
Conjugation:	Unconjugated
Storage:	Store the antibody undiluted at 2-8°C for one month or (in aliquots) at -20°C for longer. Avoid repeated freezing and thawing.
Stability:	Shelf life: one year from despatch.
Gene Name:	interferon gamma receptor 2 (interferon gamma transducer 1)
Database Link:	Entrez Gene 3460 Human P38484
Background:	IFNGR2 is the non-ligand-binding beta chain of the gamma interferon receptor. Human interferon-gamma receptor is a heterodimer of IFNGR1 and IFNGR2. Defects in IFNGR2 are a cause of mendelian susceptibility to mycobacterial disease (MSMD), also known as familial disseminated atypical mycobacterial infection.
Synonyms:	IFN-gamma receptor 2, IFN-gamma-R2, Interferon-gamma receptor beta, AF1
Protein Families:	Druggable Genome, Transmembrane



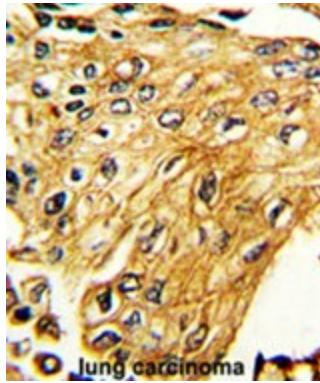
[View online »](#)

Protein Pathways: Cytokine-cytokine receptor interaction, Jak-STAT signaling pathway, Natural killer cell mediated cytotoxicity

Product images:



Western blot analysis of IFNGR2 Antibody (C-term) in MDA-MB435 cell line lysates (35ug/lane). IFNGR2 (arrow) was detected using the purified Pab.



Formalin-fixed and paraffin-embedded human lung carcinoma reacted with IFNGR2 Antibody (C-term), which was peroxidase-conjugated to the secondary antibody, followed by DAB staining. This data demonstrates the use of this antibody for immunohistochemistry; clinical relevance has not been evaluated.