

Product datasheet for **AP17474PU-N**

HMGCS1 (C-term) Rabbit Polyclonal Antibody

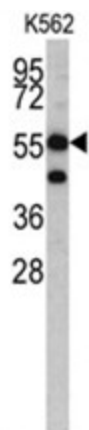
Product data:

Product Type:	Primary Antibodies
Applications:	WB
Recommended Dilution:	ELISA: 1/1,000. Western blotting: 1/50 - 1/100.
Reactivity:	Human
Host:	Rabbit
Clonality:	Polyclonal
Immunogen:	KLH conjugated synthetic peptide selected from the C-terminal region of human HMGCS1
Specificity:	This antibody reacts to HMGCS1.
Formulation:	PBS with 0.09% (W/V) sodium azide State: Liquid purified Ig
Concentration:	lot specific
Purification:	Saturated Ammonium Sulfate (SAS) precipitation
Conjugation:	Unconjugated
Storage:	Store the antibody undiluted at 2-8°C for one month or (in aliquots) at -20°C for longer. Avoid repeated freezing and thawing.
Stability:	Shelf life: one year from despatch.
Gene Name:	3-hydroxy-3-methylglutaryl-CoA synthase 1
Database Link:	Entrez Gene 3157 Human Q01581
Background:	HMGCS1 condenses acetyl-CoA with acetoacetyl-CoA to form HMG-CoA, which is the substrate for HMG-CoA reductase.
Synonyms:	HMGCS1
Protein Families:	Druggable Genome
Protein Pathways:	Butanoate metabolism, Metabolic pathways, Synthesis and degradation of ketone bodies, Terpenoid backbone biosynthesis, Valine, leucine and isoleucine degradation



[View online »](#)

Product images:



Western blot analysis of HMGCS1 antibody (C-term) in K562 cell line lysates (35ug/lane). NKRF (arrow) was detected using the purified Pab.