

Product datasheet for **AP17389PU-N**

FOXO1 (Center) Rabbit Polyclonal Antibody

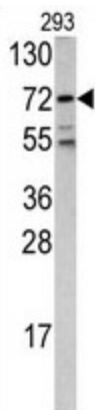
Product data:

Product Type:	Primary Antibodies
Applications:	WB
Recommended Dilution:	Western blot: 1:50 - 1:100. ELISA: 1:1,000.
Reactivity:	Human
Host:	Rabbit
Clonality:	Polyclonal
Immunogen:	KLH conjugated synthetic peptide selected from the Center region of human FKHR
Specificity:	This antibody detects FOXO1A at Center, D469.
Formulation:	PBS with 0.09% (W/V) sodium azide State: Liquid Ig fraction
Concentration:	lot specific
Purification:	Prepared by Saturated Ammonium Sulfate (SAS) precipitation followed by dialysis against PBS
Conjugation:	Unconjugated
Storage:	Store the antibody at 2 - 8 °C up to one month or (in aliquots) at -20 °C for longer. Avoid repeated freezing and thawing.
Stability:	Shelf life: one year from despatch.
Gene Name:	forkhead box O1
Database Link:	Entrez Gene 2308 Human Q12778
Background:	FKHR belongs to the forkhead family of transcription factors which are characterized by a distinct forkhead domain.
Synonyms:	Forkhead Box Protein O1, FOXO1, FKHR
Note:	Molecular weight: 69662 Da
Protein Families:	Druggable Genome, Transcription Factors
Protein Pathways:	Insulin signaling pathway, Pathways in cancer, Prostate cancer



[View online »](#)

Product images:



Western blot analysis of FKHR antibody (Center D469) in 293 cell line lysates (35 ug/lane). FKHR (arrow) was detected using the purified Pab.