

Product datasheet for **AP15142PU-N**

EPS8 (N-term) Rabbit Polyclonal Antibody

Product data:

Product Type:	Primary Antibodies
Applications:	IHC, WB
Recommended Dilution:	ELISA: 1/1,000. Western blotting: 1/100 - 1/500. Immunohistochemistry: 1/50 - 1/100.
Reactivity:	Human
Host:	Rabbit
Isotype:	Ig
Clonality:	Polyclonal
Immunogen:	This antibody is generated from rabbits immunized with a KLH conjugated synthetic peptide selected from the N-terminal region of human EPS8.
Specificity:	This antibody reacts to EPS8.
Formulation:	PBS with 0.09% (W/V) sodium azide State: Purified State: Liquid purified Ig
Concentration:	lot specific
Purification:	Protein G column, eluted with high and low pH buffers and neutralized immediately, followed by dialysis against PBS
Conjugation:	Unconjugated
Storage:	Store the antibody undiluted at 2-8°C for one month or (in aliquots) at -20°C for longer. Avoid repeated freezing and thawing.
Stability:	Shelf life: one year from despatch.
Gene Name:	epidermal growth factor receptor pathway substrate 8
Database Link:	Entrez Gene 2059 Human Q12929



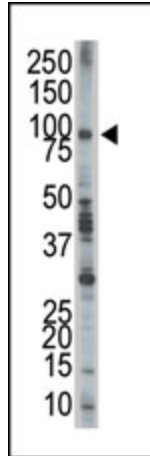
[View online »](#)

Background:

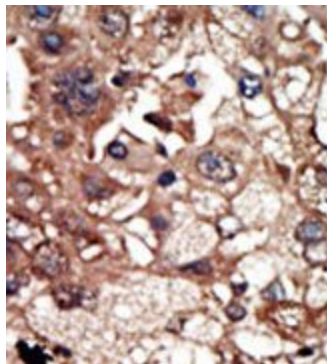
Upon binding to EGF receptor, EPS8 enhances EGF-dependent mitogenic signals. It can bind multiple cellular targets. EPS8 is expressed in all tissues analyzed, including heart, brain, placenta, lung, liver, skeletal muscle, kidney, and pancreas. It is expressed in all epithelial and fibroblastic lines examined and in some, but not all, hematopoietic cells. EPS8 is phosphorylated by several receptor tyrosine kinases. The protein contains 1 PH domain and 1 SH3 domain.

Synonyms:

EPS8

Product images:

The anti-EPS8 Pab is used in Western blot to detect EPS8 in A375 cell lysate.



Formalin-fixed and paraffin-embedded human cancer tissue reacted with the primary antibody, which was peroxidase-conjugated to the secondary antibody, followed by DAB staining.