

Product datasheet for **AP14731PU-N**

Cytochrome P450 2C9 (CYP2C9) Rabbit Polyclonal Antibody

Product data:

Product Type:	Primary Antibodies
Applications:	IHC, WB
Recommended Dilution:	ELISA: 1/1,000. Western blotting: 1/1000. Immunohistochemistry: 1/10 - 1/50.
Reactivity:	Human
Host:	Rabbit
Isotype:	Ig
Clonality:	Polyclonal
Immunogen:	This antibody is generated from rabbits immunized with a KLH conjugated synthetic peptide selected 235-265 amino acids from the Center region of human CYP2C9.
Specificity:	This antibody reacts to CYP2C9.
Formulation:	PBS with 0.09% (W/V) sodium azide State: Purified State: Liquid purified Ig
Concentration:	lot specific
Purification:	Prepared by Saturated Ammonium Sulfate (SAS) precipitation followed by dialysis against PBS
Conjugation:	Unconjugated
Storage:	Store the antibody undiluted at 2-8°C for one month or (in aliquots) at -20°C for longer. Avoid repeated freezing and thawing.
Stability:	Shelf life: one year from despatch.
Gene Name:	cytochrome P450 family 2 subfamily C member 9
Database Link:	Entrez Gene 1559 Human P11712



[View online »](#)

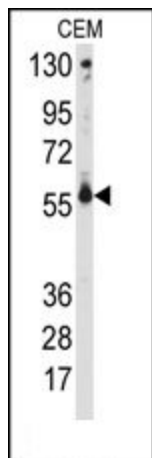
Background:

CYP2C9 is a member of the cytochrome P450 superfamily of enzymes. The cytochrome P450 proteins are monooxygenases which catalyze many reactions involved in drug metabolism and synthesis of cholesterol, steroids and other lipids. The protein localizes to the endoplasmic reticulum and its expression is induced by rifampin. The enzyme is known to metabolize many xenobiotics, including phenytoin, tolbutamide, ibuprofen and S-warfarin.

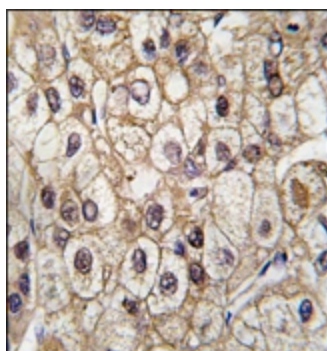
Synonyms:

Cytochrome P450 2C9, CYP2C10, CYP11C9, Cytochrome P450 PB-1, Cytochrome P450 MP-4/MP-8

Product images:



Western blot analysis of anti-CYP2C9 Antibody (Center) in CEM cell line lysates (35ug/lane).CYP2C9 (arrow) was detected using the purified Pab.



Formalin-fixed and paraffin-embedded human hepatocarcinoma tissue reacted with CYP2C9 antibody (Center), which was peroxidase-conjugated to the secondary antibody, followed by DAB staining.