

## Product datasheet for **AP14000PU-N**

### **Nrf2 (NFE2L2) Rabbit Polyclonal Antibody**

#### **Product data:**

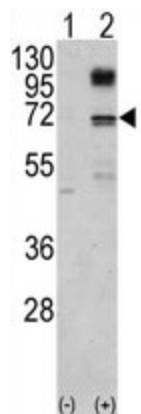
<b>Product Type:</b>	Primary Antibodies
<b>Applications:</b>	WB
<b>Recommended Dilution:</b>	ELISA 1:1,000. Western blot 1:50 - 1:100.
<b>Reactivity:</b>	Human
<b>Host:</b>	Rabbit
<b>Isotype:</b>	Ig
<b>Clonality:</b>	Polyclonal
<b>Immunogen:</b>	This antibody is generated from rabbits immunized with a KLH conjugated synthetic peptide corresponding to amino acid residues surrounding S40 of human NFE2L2.
<b>Specificity:</b>	This antibody detects NFE2L2.
<b>Formulation:</b>	PBS with 0.09% (W/V) sodium azide State: Aff - Purified State: Liquid Ig fraction
<b>Concentration:</b>	lot specific
<b>Purification:</b>	Protein A column, followed by peptide affinity purification.
<b>Conjugation:</b>	Unconjugated
<b>Storage:</b>	Store the antibody at 2 - 8 °C up to one month or (in aliquots) at -20 °C for longer. Avoid repeated freezing and thawing.
<b>Stability:</b>	Shelf life: one year from despatch.
<b>Gene Name:</b>	nuclear factor, erythroid 2 like 2
<b>Database Link:</b>	<a href="#">Entrez Gene 4780 Human Q16236</a>
<b>Background:</b>	NFE2 (MIM 601490), NFE2L1 (MIM 163260), and NFE2L2 comprise a family of human basic leucine zipper (bZIP) transcription factors. They share highly conserved regions that are distinct from other bZIP families, such as JUN (MIM 165160) and FOS (MIM 164810), although remaining regions have diverged considerably from each other (Chan et al., 1995).
<b>Synonyms:</b>	NRF2,HEBP1



[View online »](#)

Note: Molecular weight: 67827 Da

### Product images:



Western blot analysis of NFE2L2 (arrow) using NFE2L2 Antibody. 293 cell lysates (2 ug/lane) either nontransfected (Lane 1) or transiently transfected with the NFE2L2 gene (Lane 2) (Origene Technologies).