

Product datasheet for **AP13026PU-N**

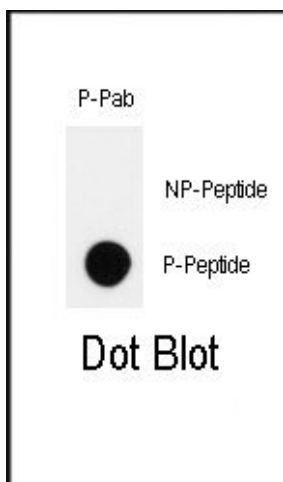
HIPK2 pTyr361 Rabbit Polyclonal Antibody

Product data:

Product Type:	Primary Antibodies
Recommended Dilution:	ELISA: 1/1,000. Dot Blot: 1/500.
Reactivity:	Human
Host:	Rabbit
Isotype:	Ig
Clonality:	Polyclonal
Immunogen:	This antibody is generated from rabbits immunized with a KLH conjugated synthetic phosphopeptide corresponding to amino acid residues surrounding Y361 of human HIPK2.
Specificity:	This antibody reacts to HIPK2 pTyr361.
Formulation:	PBS with 0.09% (W/V) sodium azide State: Aff - Purified State: Liquid purified Ig
Concentration:	lot specific
Purification:	Protein A column, followed by two-step phosphospecific peptide affinity purification
Conjugation:	Unconjugated
Storage:	Store the antibody undiluted at 2-8°C for one month or (in aliquots) at -20°C for longer. Avoid repeated freezing and thawing.
Stability:	Shelf life: one year from despatch.
Gene Name:	homeodomain interacting protein kinase 2
Database Link:	Entrez Gene 28996 Human Q9H2X6
Background:	HIPK2 is a conserved serine/threonine nuclear kinase that interacts with homeodomain transcription factors.
Synonyms:	DKFZp686K02111; FLJ23711; hHIPk2; PRO0593



[View online »](#)

Product images:

Dot blot analysis of anti-Phospho-HIPK2-pY361 Antibody on nitrocellulose membrane. 50ng of Phospho-peptide or Non Phospho-peptide per dot were adsorbed. Antibody working concentrations are 0.5ug per ml.