

Product datasheet for **AP12510PU-N**

APE1 (APEX1) (N-term) Rabbit Polyclonal Antibody

Product data:

Product Type:	Primary Antibodies
Applications:	IF, WB
Recommended Dilution:	ELISA: 1/1,000. Western Blot: 1/50-1/100. Immunofluorescence: 1/10-1/50.
Reactivity:	Human
Host:	Rabbit
Isotype:	Ig
Clonality:	Polyclonal
Immunogen:	KLH conjugated synthetic peptide between 40~70 amino acids from the N-terminal region of Human APEX1
Specificity:	This antibody detects APEX1 / REF-1 (N-term).
Formulation:	PBS with 0.09% (W/V) Sodium Azide as preservative. State: Purified State: Liquid purified Ig fraction.
Concentration:	lot specific
Purification:	Saturated Ammonium Sulfate (SAS) precipitation followed by dialysis against PBS.
Conjugation:	Unconjugated
Storage:	Store the antibody undiluted at 2-8°C for one month or (in aliquots) at -20°C for longer. Avoid repeated freezing and thawing.
Stability:	Shelf life: one year from despatch.
Gene Name:	apurinic/aprimidinic endodeoxyribonuclease 1
Database Link:	Entrez Gene 328 Human P27695



[View online »](#)

Background:

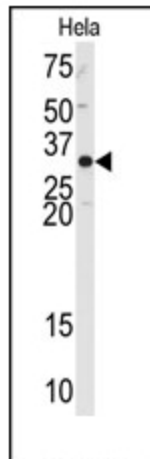
Apurinic/aprimidinic (AP) sites occur frequently in DNA molecules by spontaneous hydrolysis, by DNA damaging agents or by DNA glycosylases that remove specific abnormal bases. AP sites are pre-mutagenic lesions that can prevent normal DNA replication so the cell contains systems to identify and repair such sites. Class II AP endonucleases cleave the phosphodiester backbone 5' to the AP site. This protein is the major AP endonuclease in human cells.

Synonyms:

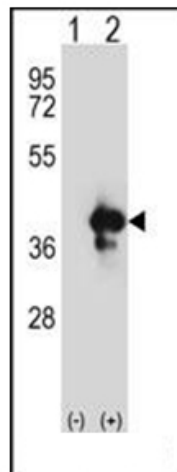
APE, APEX, APX, HAP1, REF1, APEN

Note:

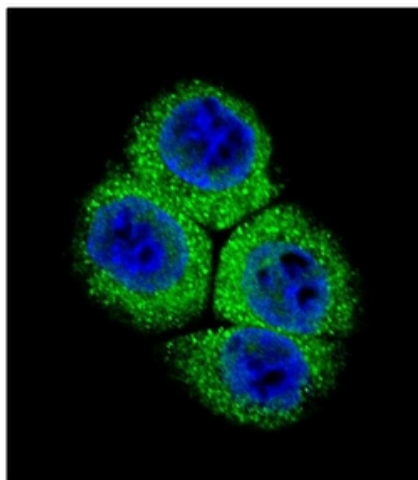
Molecular weight: 35555 Da

Product images:


Western blot analysis of anti-rified Pab.



Western blot analysis of APEX1 (arrow) using APEX1 Antibody (N-term). 293 cell lysates (2 ug/lane) either nontransfected (Lane 1) or transiently transfected (Lane 2) with the APEX1 gene.



Confocal Immunofluorescent analysis of APEX1 Antibody (N-term) with HeLa cell followed by Alexa Fluor 488-conjugated Goat anti-Rabbit IgG (green). DAPI was used to stain the cell nuclear (blue).