

Product datasheet for **AP11336PU-N**

TXN (N-term) Rabbit Polyclonal Antibody

Product data:

Product Type:	Primary Antibodies
Applications:	WB
Recommended Dilution:	Peptide ELISA: 1/1,000. Western blot: ~ 1/1,000.
Reactivity:	Human
Host:	Rabbit
Isotype:	Ig
Clonality:	Polyclonal
Immunogen:	KLH conjugated synthetic peptide between 1-30 amino acids from the N-terminal region of Human TrX.
Specificity:	This antibody is specific to Thioredoxin (TRX) (N-term).
Formulation:	PBS containing 0.09% (W/V) Sodium Azide as preservative. State: Purified State: Liquid purified Ig fraction.
Concentration:	lot specific
Purification:	Saturated Ammonium Sulfate (SAS) precipitation followed by dialysis against PBS.
Conjugation:	Unconjugated
Storage:	Store the antibody undiluted at 2-8°C for one month or (in aliquots) at -20°C for longer. Avoid repeated freezing and thawing.
Stability:	Shelf life: one year from despatch.
Gene Name:	thioredoxin
Database Link:	Entrez Gene 7295 Human P10599



[View online »](#)

Background:

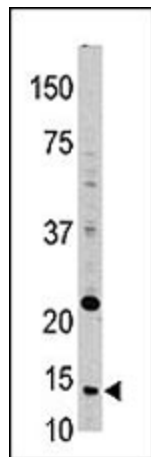
Thioredoxins (Trx) are small, multi-functional proteins with oxidoreductase activity and are ubiquitous in essentially all living cells. Trx contains a redox active disulfide/dithiol group within the conserved Cys-Gly-Pro-Cys active site. The two cysteine residues in the conserved active centers can be oxidized to form intramolecular disulfide bonds. Reduction of the active site disulfide in oxidized Trx is catalyzed by Trx reductase with NADPH as the electron donor. The reduced Trx is a hydrogen donor for ribonucleotide reductase, the essential enzyme for DNA synthesis, and a potent general protein disulfide reductase with numerous functions in growth and redox regulations. Specific protein disulfide targets for reduction by Trx include protein disulfide isomerase(PDI) and a number of transcription factors such as p53, NF-kB and AP-1. Trx is also capable of removing H₂O₂, particularly when it is coupled with either methionine sulfoxide reductase or several isoforms of peroxiredoxins.

Synonyms:

TXN, TRDX, TRX, ATL-derived factor, ADF, SASP

Note:

Calculated MW: 11737 Da

Product images:


Western blot analysis of anti-TrX antibody in HL-60 cell line lysate. TrX (arrow) was detected using the purified Pab.