

Product datasheet for **AP09488PU-N**

CDK6 pTyr13 Rabbit Polyclonal Antibody

Product data:

Product Type:	Primary Antibodies
Applications:	IF, IHC, WB
Recommended Dilution:	Western blot: 1/500-1/1000. Note: Incubate membrane with diluted antibody in 5% nonfat milk, 1xTBS, 0.1% Tween-20 at 4°C with gentle shaking, overnight. Immunofluorescence: 1/100-1/200. Immunohistochemistry on Paraffin-Embedded Sections: 1/50-1/100.
Reactivity:	Human, Mouse
Host:	Rabbit
Clonality:	Polyclonal
Immunogen:	The antiserum was produced against synthesized phosphopeptide derived from Human CDK6 around the phosphorylation site of Tyrosine 13 (Q-Q-Y _p -E-C).
Specificity:	This Antibody detects endogenous levels of CDK6 only when phosphorylated at Tyrosine 13.
Formulation:	PBS (without Mg ²⁺ and Ca ²⁺), pH 7.4, 150 mM NaCl, 0.02% Sodium Azide and 50% Glycerol. State: Aff - Purified State: Liquid purified Ig fraction.
Concentration:	lot specific
Purification:	Immunoaffinity Chromatography using epitope-specific phosphopeptide. The antibody against non-phosphopeptide was removed by chromatography using non-phosphopeptide corresponding to the phosphorylation site.
Conjugation:	Unconjugated
Storage:	Store the antibody (in aliquots) at -20°C. Avoid repeated freezing and thawing.
Stability:	Shelf life: One year from despatch.
Gene Name:	cyclin-dependent kinase 6
Database Link:	Entrez Gene 12571 Mouse Entrez Gene 1021 Human Q00534



[View online »](#)

Background: CDK6 is a member of the cyclin-dependent protein kinase (CDK) family. CDK family members are highly similar to the gene products of *Saccharomyces cerevisiae* cdc28, and *Schizosaccharomyces pombe* cdc2, and are known to be important regulators of cell cycle progression. This kinase is a catalytic subunit of the protein kinase complex that is important for cell cycle G1 phase progression and G1/S transition. The activity of Cdk6 first appears in mid-G1 phase, and is controlled by regulatory subunits including D-type cyclins and members of INK4 family of CDK inhibitors. This kinase, as well as CDK4, has been shown to phosphorylate, and thus regulate the activity of, tumor suppressor protein Rb.

Synonyms: PLSTIRE

Note: Molecular Weight: 36 kDa

Protein Families: Druggable Genome, Protein Kinase

Protein Pathways: Cell cycle, Chronic myeloid leukemia, Glioma, Melanoma, Non-small cell lung cancer, p53 signaling pathway, Pancreatic cancer, Pathways in cancer, Small cell lung cancer

Product images:

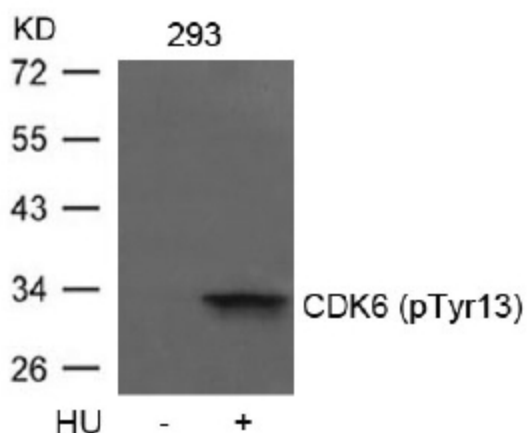
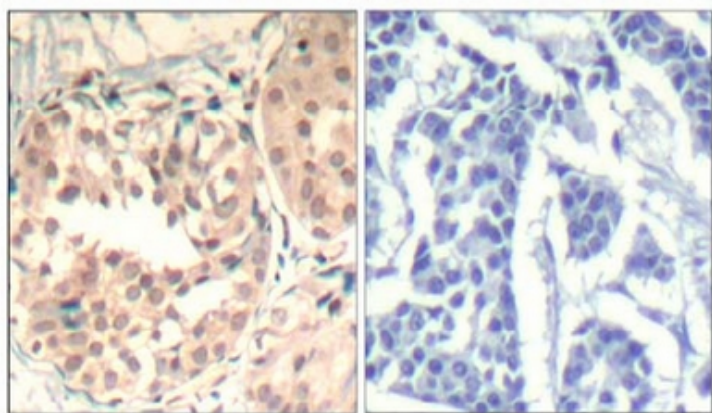


Figure 3. Western blot analysis of extracts from 293 cells untreated or treated with HU using CDK6 pTyr13 Antibody.



P-Peptide

-

+

Figure 1. Immunohistochemical analysis of paraffin-embedded human breast carcinoma tissue using CDK6 pTyr13 Antibody.

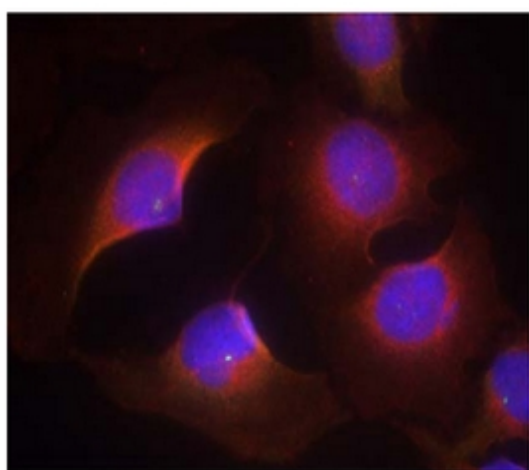


Figure 2. Immunofluorescence staining of methanol-fixed HeLa cells using CDK6 pTyr13 Antibody (Red).