

## Product datasheet for **AP09475PU-N**

### alpha Synuclein (SNCA) Rabbit Polyclonal Antibody

#### Product data:

Product Type:	Primary Antibodies
Applications:	IF, WB
Recommended Dilution:	<b>Western Blot:</b> 1/500~1/1000. <b>Immunofluorescence:</b> 1/100~1/200.
Reactivity:	Human, Mouse, Rat
Host:	Rabbit
Clonality:	Polyclonal
Immunogen:	Peptide sequence around amino acids 131~135 (E-G-Y-Q-D) derived from Human Alpha-Synuclein
Specificity:	Antibody AP09475PU detects endogenous levels of total Synuclein protein.
Formulation:	PBS (without Mg <sup>2+</sup> and Ca <sup>2+</sup> ), pH 7.4, 150 mM NaCl, 0.02% Sodium Azide and 50% Glycerol State: Aff - Purified State: Liquid purified Ig fraction
Concentration:	lot specific
Purification:	Immunoaffinity Chromatography using epitope-specific immunogen
Conjugation:	Unconjugated
Storage:	Store the antibody (in aliquots) at -20°C. Avoid repeated freezing and thawing.
Stability:	Shelf life: One year from despatch.
Gene Name:	synuclein alpha
Database Link:	<a href="#">Entrez Gene 20617 Mouse</a> <a href="#">Entrez Gene 29219 Rat</a> <a href="#">Entrez Gene 6622 Human P37840</a>



[View online »](#)

**Background:**

Alpha Synuclein is implicated in the regulation of dopamine release and transport. It is a soluble protein, expressed principally in the brain but also expressed in low concentrations in all tissues examined (except liver). In the nervous system, alpha Synuclein is primarily located at presynaptic terminals and is found membrane bound in dopaminergic neurons. It can form filamentous aggregates that are the major non amyloid component of intracellular inclusions in several neurodegenerative diseases (synucleinopathies), including Parkinson's Disease. Alpha Synuclein induces fibrillization of microtubule associated protein tau and reduces neuronal responsiveness to various apoptotic stimuli, leading to a decreased caspase 3 activation. Alpha synuclein is a protein phosphorylated predominantly on serine residues.

**Synonyms:**

NACP, PARK1

**Protein Families:**

Druggable Genome

**Protein Pathways:**

Alzheimer's disease, Parkinson's disease

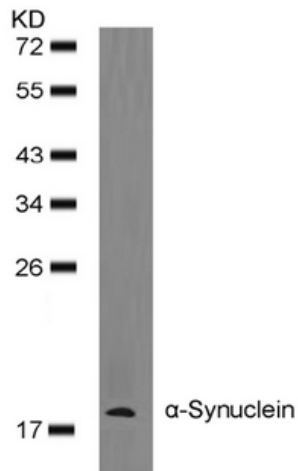
**Product images:**

Figure 2. Western blot analysis of extracts from sknas cells using Alpha-Synuclein Antibody.

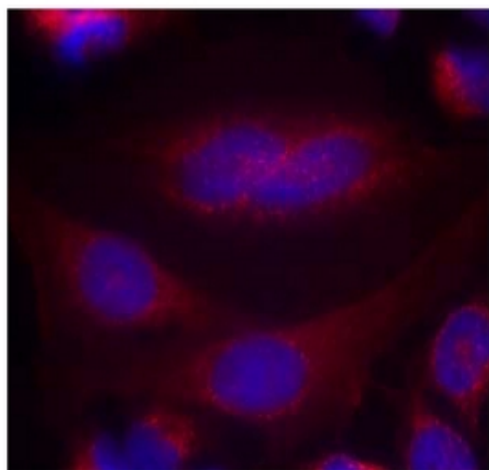


Figure 1. Immunofluorescence staining of methanol-fixed HeLa cells using Alpha-Synuclein Antibody (Red).