

Product datasheet for **AP09091SU-N**

SARS M (C-term) Rabbit Polyclonal Antibody

Product data:

Product Type:	Primary Antibodies
Applications:	EM, IF, IP, WB
Recommended Dilution:	Immunoprecipitation: 1:60. Western blot: 1:1,000 (a band of approximately 25 kDa in size corresponding to SARS-CoV membrane protein in the appropriate cell lysate or extract). Immunoelectron microscopy: 1:200. Immunofluorescence: 1:1,000 (Vero-E6 cells, grown on glass slides, were infected with SARS-CoV-Fr1 strain for 1 h at 37°C. Infection occurred in PBS/DEAE/2%FCS followed by exchange to EMEM/25mMHEPES/2%FCS. Cells were fixed with PBS/3%PFA. After washing fixed cells, antibody incubation was performed in PBS/5%FCS for 30 min).
Reactivity:	SARS-CoV
Host:	Rabbit
Isotype:	IgG
Clonality:	Polyclonal
Immunogen:	BSA coupled synthetic peptide corresponding to the C-terminus (amino acid residues 204-221) of the SARS Coronavirus Membrane protein
Specificity:	This antibody is directed against SARS-Coronavirus membrane protein. Cross reactivity with homologues from other sources has not been determined.
Formulation:	0.01% (w/v) Sodium Azide State: Serum State: Liquid sterile filtered neat antiserum
Concentration:	lot specific
Conjugation:	Unconjugated
Storage:	Store the antibody at 2 - 8 °C up to one month or (in aliquots) at -20 °C or below for longer. Avoid repeated freezing and thawing. Should this product contain a precipitate we recommend microcentrifugation before use.
Stability:	Shelf life: one year from despatch.
Database Link:	P59596

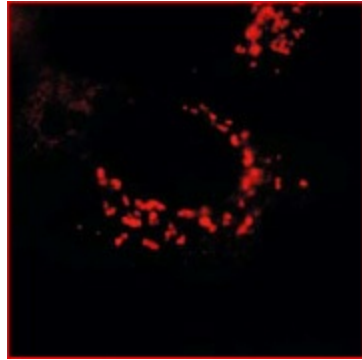


[View online »](#)

Background: The coronavirus membrane protein is a major structural component of the viral envelope and a determinant of virus assembly.

Synonyms: SARS-CoV M, Severe acute respiratory syndrome coronavirus Membrane protein, M protein, Membrane glycoprotein, Matrix protein, Matrix glycoprotein, E1 glycoprotein

Product images:



Immunofluorescence Microscopy using anti-SARS-CoV Membrane protein antibody, 6-h post infection Vero-E6 cells. For detection Cy3 conjugated Goat-anti-Rabbit IgG MX (611-104-122) was used. Personal Communication, Eric Snijder, Leiden University Medical Cen