

Product datasheet for **AP08569PU-N**

CMG1 (IFT74) (588-600) Goat Polyclonal Antibody

Product data:

Product Type:	Primary Antibodies
Applications:	ELISA, IHC, WB
Recommended Dilution:	ELISA: 1/16000. Immunohistochemistry on Paraffin Sections: 5 µg/ml. Western Blot.
Reactivity:	Human, Monkey
Host:	Goat
Isotype:	IgG
Clonality:	Polyclonal
Immunogen:	Synthetic peptide from the C-terminus of Human IFT74
Specificity:	Recognizes IFT74/CMG1 at aa 588-600.
Formulation:	Tris saline buffer, pH 7.3 containing 0.5% BSA as stabilizer and 0.02% Sodium Azide as preservative State: Aff - Purified State: Liquid purified Ig fraction
Concentration:	lot specific
Purification:	Immunoaffinity Chromatography
Conjugation:	Unconjugated
Storage:	Store the antibody undiluted at 2-8°C for one month or (in aliquots) at -20°C for longer. Avoid repeated freezing and thawing.
Stability:	Shelf life: one year from despatch.
Gene Name:	intraflagellar transport 74
Database Link:	Entrez Gene 80173 Human Q96LB3



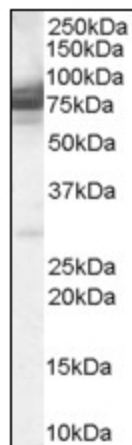
[View online »](#)

Background:

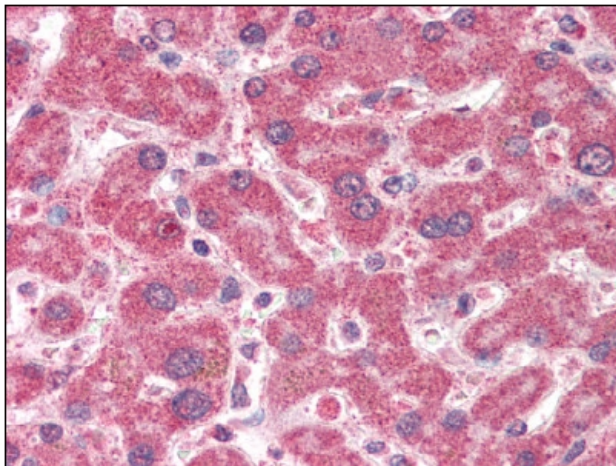
Capillary morphogenesis protein 1 (CMG1) is a 600 amino acid protein and has a calculated molecular mass of 65 kD. CMG1 contains a coiled-coil domain (which shares 24% identity with myosin heavy chain sequences from various species) and several putative phosphorylation sites. Bell et al. (2001) determined that CMG1 was 1 of several transcripts upregulated by umbilical vein endothelial cells during capillary morphogenesis in 3-dimensional collagen matrices. RT-PCR detected highest expression in adult and fetal kidney and lower expression in adult heart, placenta, lung, liver, and pancreas, and in fetal heart, lung, and liver. Little to no expression was detected in adult brain and skeletal muscle or in fetal brain, thymus, and spleen. Transfection into epithelial tumor cells revealed targeting of fluorescent-tagged CMG1 to an intracellular vesicular compartment.

Synonyms:

CCDC2, CMG1, CMG-1

Product images:

Antibody staining (0.3 ug/ml) of 293 lysate (RIPA buffer, 35 ug total protein per lane). Primary incubated for 1 hour. Detected by western blot using Chemiluminescence.



Liver: Formalin-Fixed Paraffin-Embedded (FFPE)