

## Product datasheet for **AP08527PU-N**

### EGFR Sheep Polyclonal Antibody

#### Product data:

Product Type:	Primary Antibodies
Applications:	ELISA, IF, IHC, IP, WB
Recommended Dilution:	<b>ELISA.</b> <b>Immunocytochemistry.</b> <b>Immunofluorescence.</b> <b>Immunohistochemistry on Paraffin Sections:</b> 5 µg/ml. <b>Immunoprecipitation.</b> <b>Western Blot.</b>
Reactivity:	Chicken, Human, Mouse, Rat
Host:	Sheep
Isotype:	IgG
Clonality:	Polyclonal
Immunogen:	Recombinant 20 amino acid residues representing a portion of the internal domain of EGFR proximal to the phosphorylation region.
Specificity:	This antibody recognizes Human Epidermal Growth Factor Receptor.
Formulation:	0.15M PBS, pH 7.2 without preservatives State: Aff - Purified State: Liquid purified IgG fraction
Concentration:	lot specific
Purification:	Protein G Chromatography
Conjugation:	Unconjugated
Storage:	Store undiluted at 2-8°C for one month or (in aliquots) at -20°C for longer. Avoid repeated freezing and thawing.
Stability:	Shelf life: one year from despatch.
Gene Name:	epidermal growth factor receptor
Database Link:	<a href="#">Entrez Gene 1956 Human P00533</a>



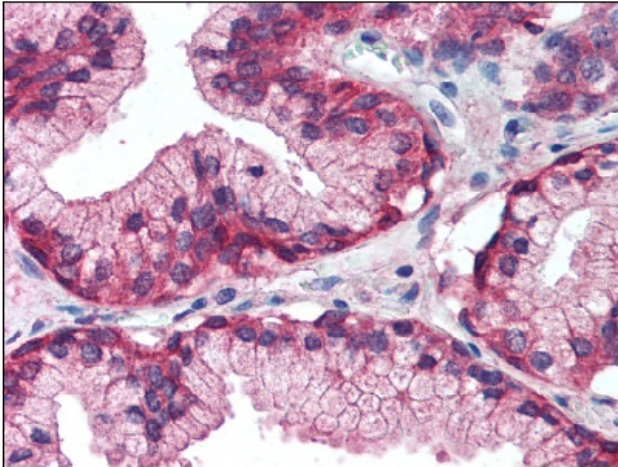
[View online »](#)

**Background:**

Protein kinases are enzymes that transfer a phosphate group from a phosphate donor onto an acceptor amino acid in a substrate protein. By this basic mechanism, protein kinases mediate most of the signal transduction in eukaryotic cells, regulating cellular metabolism, transcription, cell cycle progression, cytoskeletal rearrangement and cell movement, apoptosis, and differentiation. The protein kinase family is one of the largest families of proteins in eukaryotes, classified in 8 major groups based on sequence comparison of their tyrosine (PTK) or serine/threonine (STK) kinase catalytic domains. Epidermal Growth factor receptor (EGFR) is the prototype member of the type 1 receptor tyrosine kinases. EGFR overexpression in tumors indicates poor prognosis and is observed in tumors of the head and neck, brain, bladder, stomach, breast, lung, endometrium, cervix, vulva, ovary, esophagus, stomach and in squamous cell carcinoma.

**Synonyms:**

Epidermal growth factor receptor, EGF Receptor, erbB-1, c-ErbB-1

**Product images:**

Formalin-Fixed Paraffin-Embedded Human Prostate stained with EGFR antibody at 5 ug/ml followed by biotinylated secondary antibody, alkaline phosphatase-streptavidin and chromogen.