

Product datasheet for **AP07398PU-N**

P Glycoprotein (ABCB1) (262-277) Rabbit Polyclonal Antibody

Product data:

| | |
|-----------------------|--|
| Product Type: | Primary Antibodies |
| Applications: | ELISA, IHC, WB |
| Recommended Dilution: | ELISA: 1/10000 - 1/50000. Immunohistochemistry on Paraffin Sections: 5 µg/ml. Western Blot: 1/200 - 1/2000. |
| Reactivity: | Canine, Human, Monkey, Mouse, Rat |
| Host: | Rabbit |
| Clonality: | Polyclonal |
| Immunogen: | Synthetic peptide - KLH conjugated |
| Specificity: | This antibody reacts to amino acids 262-277 of ABCB1 protein. |
| Formulation: | 0.02 M Potassium Phosphate, 0.15 M Sodium Chloride, pH 7.2 with 0.01% (w/v) Sodium Azide State: Aff - Purified State: Liquid purified Ig |
| Concentration: | lot specific |
| Purification: | Immunoaffinity Chromatography |
| Conjugation: | Unconjugated |
| Storage: | Store the antibody undiluted at 2-8°C for one month or (in aliquots) at -20°C for longer. Avoid repeated freezing and thawing. |
| Stability: | Shelf life: one year from despatch. |
| Gene Name: | ATP binding cassette subfamily B member 1 |
| Database Link: | Entrez Gene 5243 Human P08183 |



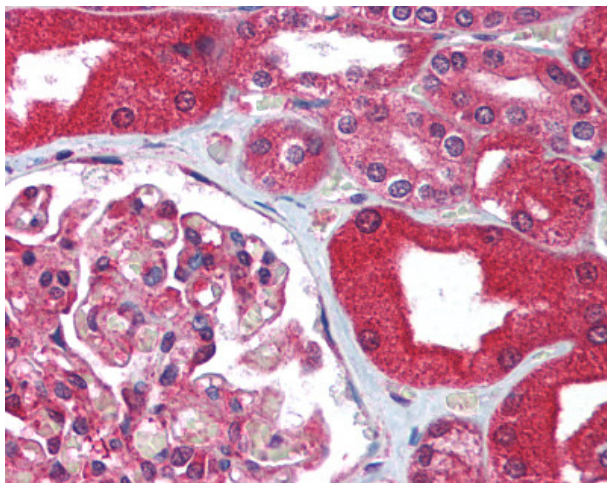
[View online »](#)

Background:

ATP-Binding Cassette Sub-Family B Member 1 (ABCB1, also named P-glycoprotein) is a plasma membrane-associated multidrug transporter that utilizes the energy of ATP hydrolysis to pump toxic xenobiotics out of cells. Unique features of ABCB1 are its very broad substrate specificity and its basal ATPase activity in the absence of transport substrates. Human ABCB1 plays an important role in absorption, distribution, metabolism, excretion and toxicity of pharmacologically relevant drugs. It is responsible for decreased drug accumulation in multidrug-resistant cells and often mediates the development of resistance to anti-cancer drugs. This protein also functions as a transporter across the blood-brain barrier.

Synonyms:

Multidrug resistance protein 1, P-glycoprotein 1, ABCB1, PGY1

Product images:

Kidney: Formalin-Fixed Paraffin-Embedded (FFPE)