

Product datasheet for **AP06798PU-N**

Dffa Rabbit Polyclonal Antibody

Product data:

Product Type:	Primary Antibodies
Applications:	ELISA, IHC, WB
Recommended Dilution:	Western blot: 1/500-1/1000. Immunohistochemistry on paraffin sections: 1/50-1/200. Immunofluorescence: 1/50-1/200.
Reactivity:	Human, Mouse, Rat
Host:	Rabbit
Clonality:	Polyclonal
Immunogen:	Synthetic peptide, corresponding to amino acids 151-200 of Human ICAD.
Specificity:	This antibody detects endogenous levels of ICAD protein. (region surrounding Gln177)
Formulation:	Phosphate buffered saline (PBS), pH 7.2. State: Aff - Purified State: Liquid purified Ig fraction Preservative: 0.05% sodium azide
Concentration:	1.0 mg/ml
Purification:	Affinity-chromatography using epitope-specific immunogen and the purity is > 95% (by SDS-PAGE)
Conjugation:	Unconjugated
Storage:	Store undiluted at 2-8°C for one month or (in aliquots) at -20°C for longer. Avoid repeated freezing and thawing.
Stability:	Shelf life: one year from despatch.
Predicted Protein Size:	~ 36 kDa
Gene Name:	DNA fragmentation factor, alpha subunit
Database Link:	Entrez Gene 13347 Mouse O54786



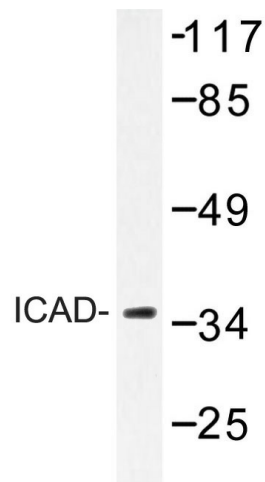
[View online »](#)

Background:

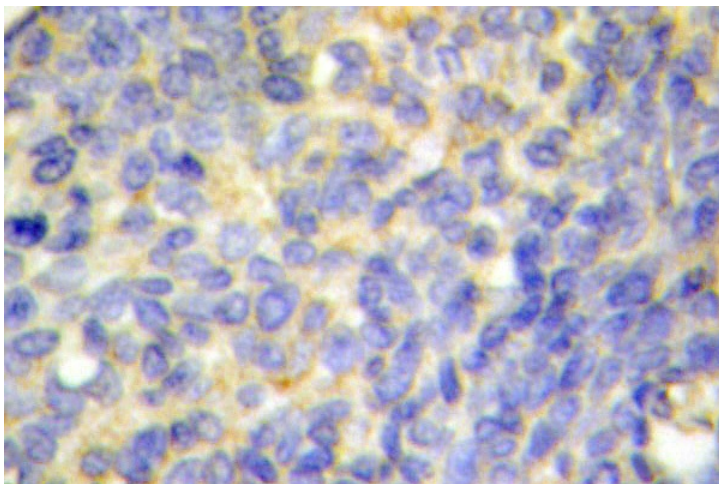
The CED/ICE family of cysteine proteases plays a pivotal role in mediating apoptosis through the proteolysis of specific targets. Among the targets are poly (ADP-ribose) polymerase (PARP), gelsolin, DFF-45/ICAD and the nuclear lamins. PARP is a 112 kDa nuclear protein that is specifically cleaved by CPP32 and Mch2, but not by ICE, into a signature 85 kDa apoptotic fragment. Gelsolin is cleaved by CPP32 to an active form that severs actin filaments in a Ca^{++} -independent manner. In addition to binding actin, gelsolin can form complexes with fibronectin, which may be important for localizing gelsolin to inflammatory sites. DFF-45/ICAD, the 45 kDa subunit of DNA fragmentation factor, is cleaved by CPP32 to generate an active factor that induces DNA fragmentation. The 70 kDa nuclear Lamin A is cleaved by Mch2, but not CPP32. Nuclear Lamin B is fragmented as a consequence of apoptosis by an unidentified member of the ICE family.

Synonyms:

DFF1, DFF45, DFF-45

Product images:

Western blot (WB) analysis of ICAD antibody in extracts from Jurkat cells.



Immunohistochemistry (IHC) analyzes of ICAD antibody in paraffin-embedded human breast carcinoma tissue