

Product datasheet for **AP06626PU-N**

Aurora A (AURKA) Rabbit Polyclonal Antibody

Product data:

Product Type:	Primary Antibodies
Applications:	IF, IHC, WB
Recommended Dilution:	Western blot: 1/500-1/1000. Immunohistochemistry on paraffin sections: 1/50-1/200. Immunofluorescence: 1/50-1/200.
Reactivity:	Human, Mouse, Rat
Host:	Rabbit
Clonality:	Polyclonal
Immunogen:	Synthetic peptide, corresponding to amino acids 311-360 of Human AURKA.
Specificity:	This antibody detects endogenous levels of AurA protein. (region surrounding Tyr338)
Formulation:	Phosphate buffered saline (PBS), pH 7.2. State: Aff - Purified State: Liquid purified Ig fraction Preservative: 0.05% sodium azide
Concentration:	1.0 mg/ml
Purification:	Affinity-chromatography using epitope-specific immunogen and the purity is > 95% (by SDS-PAGE)
Conjugation:	Unconjugated
Storage:	Store undiluted at 2-8°C for one month or (in aliquots) at -20°C for longer. Avoid repeated freezing and thawing.
Stability:	Shelf life: one year from despatch.
Predicted Protein Size:	~ 46 kDa
Gene Name:	aurora kinase A
Database Link:	Entrez Gene 6790 Human O14965



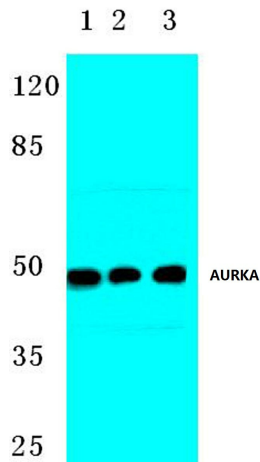
[View online »](#)

Background:

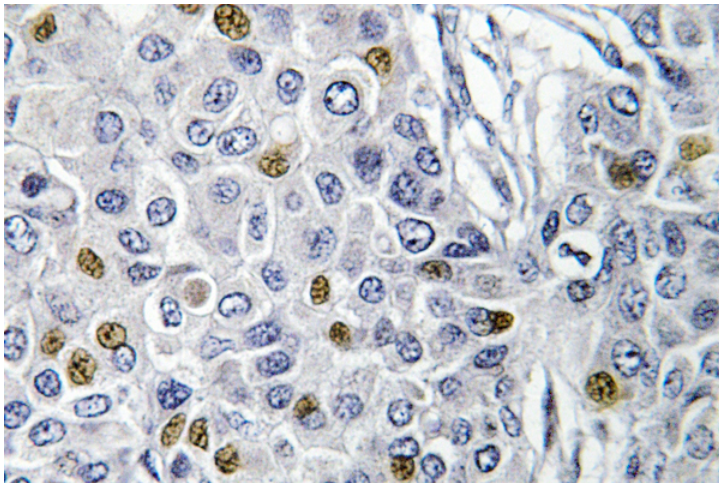
Aurora A plays a role in cell cycle regulation during anaphase and/or telophase, in relation to the function of the centrosome/spindle pole region during chromosome segregation. Aurora A plays a key role during tumor development and progression and is overexpressed in many human cancers including breast, ovarian and colorectal. Aurora A is viewed as a potential target for anticancer drug treatment.

Synonyms:

AURKA, AIK1, ARK1, AURA, BTAK, STK15, STK6, Aurora/IPL1-related kinase 1, AURORA2

Product images:


Western blot (WB) analysis of AURKA antibody at 1/500 dilution Lane 1: MCF-7 whole cell lysate Lane 2: SP2/0 whole cell lysate Lane 3: H9C2 whole cell lysate



Immunohistochemistry (IHC) analyzes of AURKA antibody in paraffin-embedded human breast carcinoma tissue.