

Product datasheet for **AP06205PU-N**

Cytokeratin 8 (KRT8) Rabbit Polyclonal Antibody

Product data:

| | |
|-------------------------|---|
| Product Type: | Primary Antibodies |
| Applications: | IF, IHC, WB |
| Recommended Dilution: | Western blot: 1/500-1/1000. Immunohistochemistry on paraffin sections: 1/50-1/200. Immunofluorescence: 1/50-1/200. |
| Reactivity: | Human, Mouse, Rat |
| Host: | Rabbit |
| Clonality: | Polyclonal |
| Immunogen: | Synthetic peptide, corresponding to amino acids 431-480 of Human Cytokeratin 8. |
| Specificity: | This Antibody detects endogenous levels of Keratin 8 protein. (region surrounding Val463) |
| Formulation: | Phosphate buffered saline (PBS), pH 7.2. State: Aff - Purified State: Liquid purified Ig fraction Preservative: 0.05% sodium azide |
| Concentration: | 1.0 mg/ml |
| Purification: | Affinity-chromatography using epitope-specific immunogen and the purity is > 95% (by SDS-PAGE) |
| Conjugation: | Unconjugated |
| Storage: | Store undiluted at 2-8°C for one month or (in aliquots) at -20°C for longer. Avoid repeated freezing and thawing. |
| Stability: | Shelf life: one year from despatch. |
| Predicted Protein Size: | ~ 55 kDa |
| Gene Name: | keratin 8 |
| Database Link: | Entrez Gene 3856 Human P05787 |



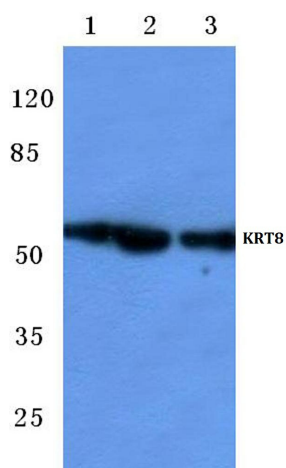
[View online »](#)

Background:

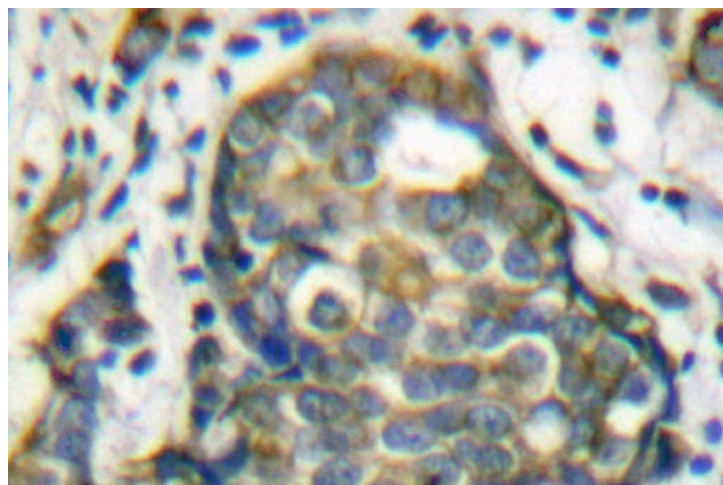
Cytokeratin 8 belongs to the type B (basic) subfamily of high molecular weight keratins and exists in combination with cytokeratin 18. Cytokeratin 8 is primarily found in the non squamous epithelia and is present in majority of adenocarcinomas and ductal carcinomas. It is absent in squamous cell carcinomas. Hepatocellular carcinomas are defined by the use of antibodies that recognize only cytokeratin polypeptides 8 and 18.

Synonyms:

KRT8, CYK8, Cytokeratin-8, CK8, Keratin-8, K8, Cytokeratin endo A

Product images:

Western blot (WB) analysis of Cytokeratin 8 antibody at 1/500 dilution Lane 1: HeLa whole cell lysate Lane 2: NIH-3T3 whole cell lysate Lane 3: H9C2 whole cell lysate



Immunohistochemistry (IHC) analyzes of Keratin 8 antibody in paraffin-embedded human breast carcinoma tissue.