

## Product datasheet for **AP05927PU-N**

### Caspase 5 (CASP5) Rabbit Polyclonal Antibody

#### Product data:

Product Type:	Primary Antibodies
Applications:	IF, WB
Recommended Dilution:	Western blot: 1.0 µg/ml - 2.0 µg/ml; detects a band of approximately 48 kDa in Ramos cell lysates. (Predicted precursor MWT 47.8kDa). Immunocytochemistry.
Reactivity:	Human
Host:	Rabbit
Isotype:	IgG
Clonality:	Polyclonal
Immunogen:	A 14 amino acid peptide from the centre of human Caspase-5.
Specificity:	This antibody recognises an epitope located within the internal region of human Caspase-5, a 47kDa cysteine protease, otherwise known as ICH-3.
Formulation:	Phosphate buffered saline containing 0.02% Sodium Azide State: Purified State: Liquid purified Ig
Concentration:	lot specific
Purification:	Affinity chromatography
Conjugation:	Unconjugated
Storage:	Store the antibody undiluted at 2-8°C for one month or (in aliquots) at -20°C for longer. Avoid repeated freezing and thawing.
Stability:	Shelf life: one year from despatch.
Gene Name:	caspase 5
Database Link:	<a href="#">Entrez Gene 838 Human P51878</a>



[View online »](#)

**Background:**

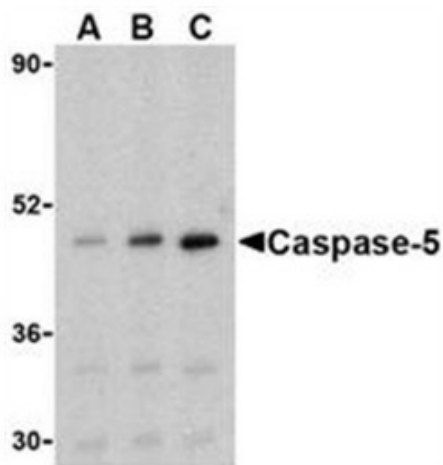
Caspase-5 has been shown to be expressed at higher levels in the colon, lung, spleen, small intestine and by peripheral blood lymphocytes.

Caspase-5 is a member of a growing number of inflammatory caspases belonging to the Caspase-1 (ICE-type) subfamily, which require proteolytic processing of their inactive precursor into smaller active subunits. Unlike Caspase-1, Caspase-5 is not directly responsible for the activation of IL-1Beta from the pro-IL-1Beta precursor, but the presence of Caspase-5 does appear to enhance the processing of IL-1Beta.

The *in vivo* expression of Caspase-5 is elevated by Lipopolysaccharide (LPS) and gene expression is also increased by Interferon gamma (IFNg). *In vitro* studies have shown cleavage of Caspase-5 by the serine protease Granzyme B, which plays a major role in Cytotoxic T lymphocyte (CTL)-induced apoptosis (1).

**Synonyms:**

CASP-5, CASP5, ICH3, ICH-3 protease, TY protease, ICE(rel)-III

**Product images:**


Western blot analysis of whole cell lysate from Ramos, Burkitt's lymphoma derived B-lymphoblastoid cells probed with Rabbit anti Human caspase-5 at 0.5 (A), 1 (B) and 2 (C) ug/ml



Immunocytochemical staining of P815 mouse mastocytoma cells with Rabbit anti Human caspase-5