

Product datasheet for **AP05885PU-N**

Angiotensin Converting Enzyme 2 (ACE2) Rabbit Polyclonal Antibody

Product data:

Product Type:	Primary Antibodies
Applications:	IHC, WB
Recommended Dilution:	Western Blot. Immunohistochemistry on Paraffin Sections: Requires antigen retrieval using heat treatment prior to staining of paraffin sections.
Reactivity:	Human
Host:	Rabbit
Isotype:	IgG
Clonality:	Polyclonal
Immunogen:	Synthetic peptide corresponding to a sequence within the amino terminus of Human ACE2.
Specificity:	This antibody is specific for Angiotensin-converting enzyme 2 (ACE2).
Formulation:	PBS State: Purified State: Liquid purified Ig fraction Preservative: 0.02% Sodium Azide
Concentration:	lot specific
Purification:	Affinity Chromatography
Conjugation:	Unconjugated
Storage:	Store undiluted at 2-8°C for one month or (in aliquots) at -20°C for longer. Avoid repeated freezing and thawing.
Stability:	Shelf life: one year from despatch.
Gene Name:	angiotensin I converting enzyme 2
Database Link:	Entrez Gene 59272 Human Q9BYF1



[View online »](#)

Background:

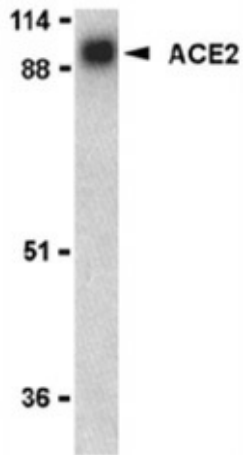
ACE2 is a carboxypeptidase which is expressed in a range of tissues including heart, kidney, testis and the gastrointestinal system.

ACE2 is a homologue of ACE (Angiotensin-converting enzyme 1), although it has a distinct catalytic activity. ACE2 catalyzes the cleavage of active angiotensin II into angiotensin 1-7, which may counteract the effects of ACE by increasing vasodilatation.

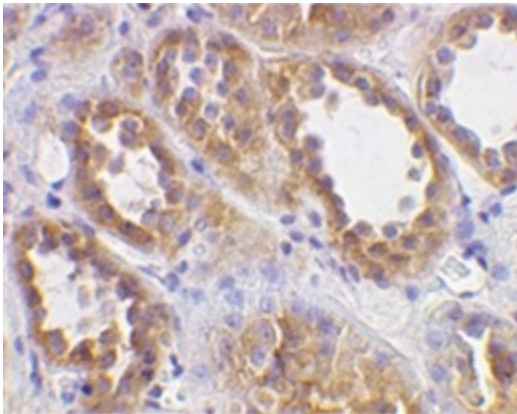
A recent discovery is that ACE2 serves as the cellular entry point for the severe acute respiratory syndrome (SARS) virus, functioning as a receptor for the SARS Spike protein.

Synonyms:

Angiotensin-converting enzyme 2

Product images:

Western blot analysis of human kidney lysate probed with Rabbit anti Human ACE2 antibody



Immunohistochemical staining of human kidney with Rabbit anti Human ACE2 antibody