

## Product datasheet for **AP02753PU-N**

### DAB1 Rabbit Polyclonal Antibody

#### Product data:

Product Type:	Primary Antibodies
Applications:	IHC
Recommended Dilution:	Immunohistochemistry: 1:50-1:100.
Reactivity:	Human, Mouse, Rat
Host:	Rabbit
Clonality:	Polyclonal
Immunogen:	The antiserum was produced against synthesized non-phosphopeptide derived from human Dab1 around the phosphorylation site of tyrosine 232 (G-V-YP-D-V).
Specificity:	Dab1 antibody detects endogenous levels of total Dab1 protein.
Formulation:	PBS (without Mg <sup>2+</sup> and Ca <sup>2+</sup> ), pH 7.4 containing 150mM NaCl, 0.02% sodium azide and 50% glycerol State: Aff - Purified State: Liquid purified IgG
Concentration:	lot specific
Purification:	The antibody was affinity-purified from rabbit antiserum by affinity-chromatography using epitope-specific immunogen
Conjugation:	Unconjugated
Storage:	Store the antibody at -20°C. Avoid repeated freezing and thawing.
Stability:	Shelf life: one year from despatch.
Gene Name:	DAB1, reelin adaptor protein
Database Link:	<a href="#">Entrez Gene 1600 Human O75553</a>



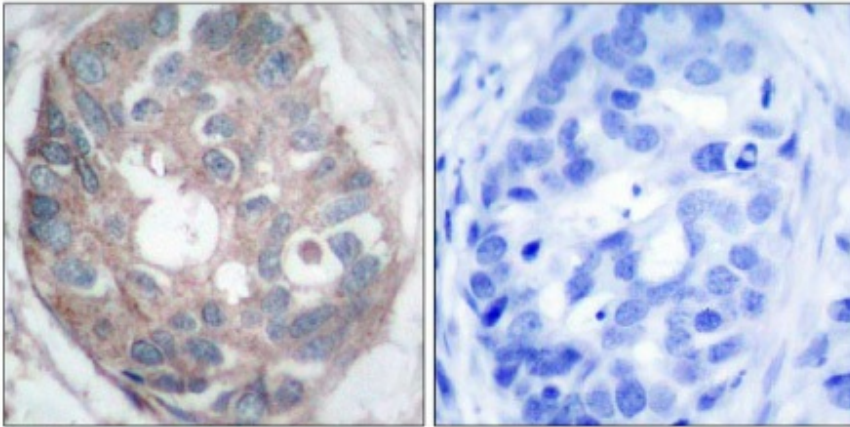
[View online »](#)

**Background:**

Disruption of DAB 1 (Disable 1) results in aberrant migration of neurons during development and disorganization of laminar structures throughout the brain. Dab1 is thought to function as an adaptor molecule in signal transduction processes. It contains a protein protein interaction (PI) similar to the phosphotyrosine binding domain of the Shc oncoprotein, it is phosphorylated by the Src protein tyrosine kinase, and it binds to SH2 binding domains in a phosphotyrosine dependent manner. DAB1 acts downstream of reelin in a signalling pathway.

**Synonyms:**

Disabled homolog 1

**Product images:**

Peptide -

+

Immunohistochemical analysis of paraffin-embedded human breast carcinoma tissue, using Dab1 antibody.