

Product datasheet for **AP02658PU-N**

Phospholipase C gamma 1 (PLCG1) Rabbit Polyclonal Antibody

Product data:

Product Type:	Primary Antibodies
Applications:	WB
Recommended Dilution:	Suitable for use in Western blot (1:500-1:1000).
Reactivity:	Human, Mouse
Host:	Rabbit
Clonality:	Polyclonal
Immunogen:	The antiserum was produced against synthesized non-phosphopeptide derived from human PLCy1 around the phosphorylation site of tyrosine 783 (G-F- <i>Yp</i> -V-E).
Specificity:	The antibody was affinity-purified from rabbit antiserum by affinity-chromatography using epitope-specific immunogen. PLCy1 antibody detects endogenous levels of total PLCy1 protein.
Formulation:	PBS (without Mg ²⁺ and Ca ²⁺), pH 7.4, 150 mM NaCl, 0.02% Sodium Azide and 50% Glycerol. State: Aff - Purified State: Liquid purified Ig fraction.
Concentration:	lot specific
Purification:	Immunoaffinity chromatography.
Conjugation:	Unconjugated
Storage:	Store the antibody (in aliquots) at -20°C. Avoid repeated freezing and thawing.
Stability:	Shelf life: One year from despatch.
Gene Name:	phospholipase C gamma 1
Database Link:	Entrez Gene 5335 Human P19174
Synonyms:	PLC1, Phospholipase C-gamma-1, PLC-gamma-1, PLC gamma1 Phospholipase C-II, PLC-II, PLC-148



[View online »](#)

Product images:

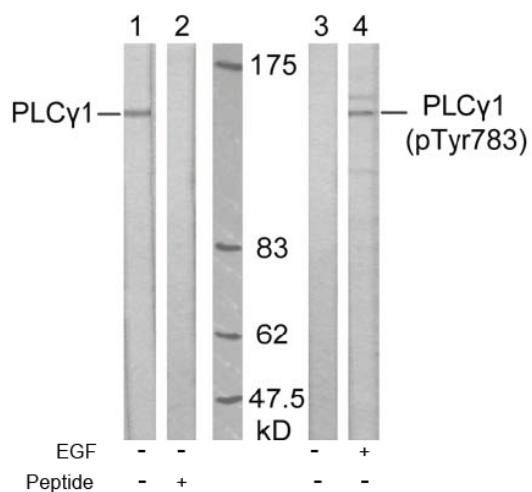


Figure 1. Western blot analysis of extract from A431 cells, untreated or treated with EGF (200 ng/ml, 10 min), using PLC γ 1 antibody (Lane 1 and 2) and PLC γ 1 (phospho-Tyr783) antibody (Lane 3 and 4).