

## Product datasheet for **AP02419PU-N**

### **Rb (RB1) pSer807 Rabbit Polyclonal Antibody**

#### **Product data:**

<b>Product Type:</b>	Primary Antibodies
<b>Applications:</b>	IHC, WB
<b>Recommended Dilution:</b>	Suitable for use in Western blot (1:500~1:1000) and Immunohistochemistry (1:50~1:100).
<b>Reactivity:</b>	Mouse
<b>Host:</b>	Rabbit
<b>Clonality:</b>	Polyclonal
<b>Immunogen:</b>	The antiserum was produced against synthesized phosphopeptide derived from human Rb around the phosphorylation site of serine 807 (Y-I-SP-P-L).
<b>Specificity:</b>	The antibody was affinity-purified from rabbit antiserum by affinity-chromatography using epitope-specific phosphopeptide. The antibody against non-phosphopeptide was removed by chromatography using non-phosphopeptide corresponding to the phosphorylation site. Rb (phospho-Ser807) antibody detects endogenous levels of Rb only when phosphorylated at serine 807.
<b>Formulation:</b>	PBS (without Mg <sup>2+</sup> and Ca <sup>2+</sup> ), pH 7.4, 150 mM NaCl, 0.02% Sodium Azide and 50% Glycerol. State: Aff - Purified State: Liquid purified Ig fraction.
<b>Concentration:</b>	lot specific
<b>Purification:</b>	Immunoaffinity chromatography.
<b>Conjugation:</b>	Unconjugated
<b>Storage:</b>	Store the antibody (in aliquots) at -20°C. Avoid repeated freezing and thawing.
<b>Stability:</b>	Shelf life: One year from despatch.
<b>Gene Name:</b>	RB transcriptional corepressor 1
<b>Database Link:</b>	<a href="#">P06400</a>
<b>Synonyms:</b>	Retinoblastoma 1, Rb, p105-Rb, pRb, pp110, OSRC



[View online »](#)

Product images:

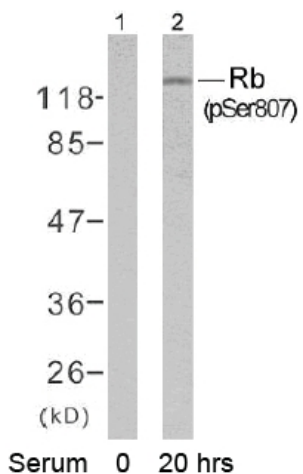


Figure 2. Western blot analysis of extracts from K562 cells untreated or treated with 10% serum after 48 hours of starvation, using Rb (phospho-Ser807) antibody AP02419PU.

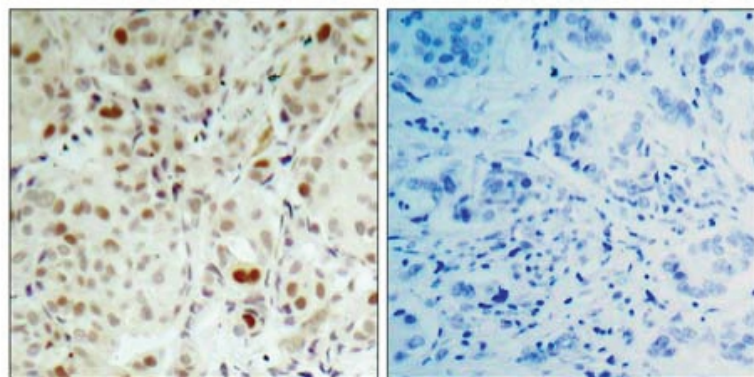


Figure 1. Immunohistochemical analysis of paraffin-embedded human breast carcinoma tissue using Rb (phospho-Ser807) antibody AP02419PU.

P-Peptide                      -                      +