

Product datasheet for **AP02130SU-N**

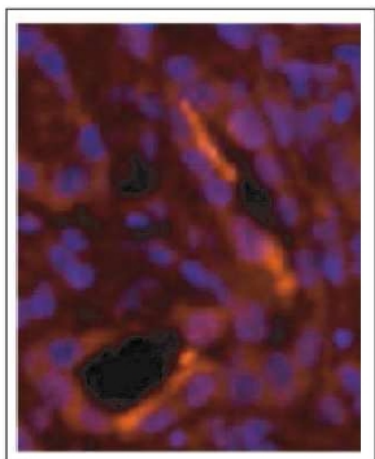
Natriuretic Peptide Receptor B (NPR2) Rabbit Polyclonal Antibody

Product data:

Product Type:	Primary Antibodies
Applications:	IHC, WB
Recommended Dilution:	Western blot (1/100). Immunohistochemistry on Cryosections (1/10,000).
Reactivity:	Human
Host:	Rabbit
Clonality:	Polyclonal
Immunogen:	Synthetic Human NPR-Bi isoform a, BTG conjugated
Specificity:	This antibody detects Natriuretic Peptide Receptor Bi.
Formulation:	State: Serum State: Lyophilized serum
Reconstitution Method:	Restore in aqua bidest to initial volume.
Conjugation:	Unconjugated
Storage:	Store lyophilized at 2-8°C and reconstituted at -20°C. Avoid repeated freezing and thawing.
Stability:	Shelf life: One year from despatch.
Gene Name:	natriuretic peptide receptor 2
Database Link:	Entrez Gene 4882 Human P20594
Synonyms:	NPR2, ANPRB, ANP-B, ANP receptor B, GC-B, Guanylate cyclase B, NPR-B, Atrial natriuretic peptide B-type receptor
Note:	LocusID 4882
Protein Families:	Druggable Genome, Protein Kinase
Protein Pathways:	Purine metabolism, Vascular smooth muscle contraction



[View online »](#)

Product images:

Immunofluorescence staining of NPR-Bi in Cryosection of Human Kidney. The Section was incubated with NPR-Bi antibody Cat.-No AP02130SU overnight and detected using Biotinylated secondary antibody and Alexa Fluor 594-streptavidin conjugate. The nuclei were visualized with DAPI. AP02130SU stains the luminal membrane of cortical collecting ducts. Hirsch J R et al. (2003) AM J Physiol Renal Physiol 285:F370-F374.