

## Product datasheet for **AP02091PU-S**

### Endothelin 1 (EDN1) Sheep Polyclonal Antibody

#### Product data:

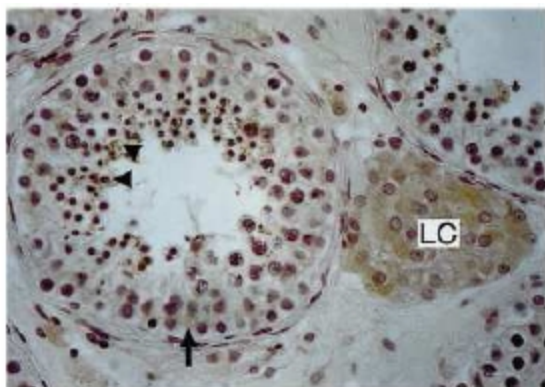
Product Type:	Primary Antibodies
Applications:	ELISA, IHC, R
Recommended Dilution:	<b>RIA.</b> <b>IRMA.</b> <b>ELISA.</b> <b>Immunohistochemistry on Frozen Sections.</b> <b>Immunohistochemistry on Paraffin Sections:</b> 1/700 (See Reference 1 for more details).
Reactivity:	Human
Host:	Sheep
Clonality:	Polyclonal
Immunogen:	Human Endothelin, KLH conjugated
Specificity:	This antibody is specific for Endothelin 1 (100%). <b>Cross Reactivities:</b> Endothelin 2: 142%. Endothelin 3: 98%. Big Endothelin (aa 1-38): < 1 %. Big Endothelin Fragment (aa 22-38): < 1%. Sarafotoxin: < 1 %. ANP: < 1%.
Formulation:	0.05M Borate buffer pH 8,5 State: Purified State: Lyophilized purified IgG fraction from Serum
Reconstitution Method:	Restore in 10 µl aqua bidest.
Purification:	Immunoaffinity Chromatography
Conjugation:	Unconjugated
Storage:	Store lyophilized at 2-8°C for 6 months or at -20°C long term. After reconstitution store the antibody undiluted at 2-8°C for one month or (in aliquots) at -20°C long term. Avoid repeated freezing and thawing.



[View online »](#)

Stability:	Shelf life: one year from despatch.
Gene Name:	endothelin 1
Database Link:	<a href="#">Entrez Gene 1906 Human P05305</a>
Synonyms:	Preproendothelin-1, Big endothelin-1, Endothelin1, PPET1, EDN1, EDN2, Endothelin-2, ET-2, Preproendothelin-2, PPET2
Note:	LocusID 1906/1907
Protein Families:	Druggable Genome, Secreted Protein
Protein Pathways:	Melanogenesis

### Product images:



**Immunohistochemistry:** Endothelin staining of paraffin human testis sections. The section was incubated with AP02091PU-S (1/700) for 24h and detected using a combination of the peroxidase-anti peroxidase (PAP) technique with the avidin-biotin-peroxidase complex method in its single variation. DAB was used as the chromogen. The section was counterstained with hematoxylin eosin. This antibody stains Leydig cells (LC). Sertoli cells (arrow) as well as mature spermatids (arrowheads). Original magnification: x450. *Ergun S et al, Anat Embryol, 1999, 199(3): 207-214.*