

Product datasheet for **AP01148BT-N**

IL17B Rabbit Polyclonal Antibody

Product data:

Product Type:	Primary Antibodies
Applications:	ELISA, WB
Recommended Dilution:	Direct ELISA: To detect hIL-17B (using 100 µl/well antibody solution) a concentration of 0.25-1.0 µg/ml of this antibody is required. In conjunction with compatible secondary reagents, it allows the detection of at least 0.2-0.4 ng/well of recombinant hIL-17B. Sandwich ELISA: To detect hIL-17B (using 100 µl/well antibody solution) a concentration of 0.25-1.0 µg/ml of this antibody is required. In conjunction with Polyclonal Anti-Human IL-17B (Cat.-No AP01148PU) as a capture antibody, it allows the detection of at least 0.2-0.4 ng/well of recombinant hIL-17B. Western blot: To detect hIL-17B this antibody can be used at a concentration of 0.1-0.2 µg/ml. Used in conjunction with compatible secondary reagents the detection limit for recombinant hIL-17B is 1.5-3.0 ng/lane, under either reducing or non-reducing conditions.
Reactivity:	Human
Host:	Rabbit
Clonality:	Polyclonal
Immunogen:	Highly pure (> 98%) <i>E.coli</i> derived recombinant Human IL-17 beta (Cat.-No PA283)
Specificity:	This antibody detects Human Interleukin-17 beta. Other species not tested.
Formulation:	PBS, pH 7.2 Label: Biotin State: Lyophilized purified (sterile filtered) Ig fraction
Reconstitution Method:	Restore in sterile PBS containing 0.1% BSA to a concentration of 0.1-1.0 mg/ml.
Purification:	Antigen Affinity Chromatography
Conjugation:	Biotin
Storage:	Store lyophilized at 2-8°C for 6 months or at -20°C long term. After reconstitution store the antibody undiluted at 2-8°C for one month or (in aliquots) at -20°C long term. Avoid repeated freezing and thawing.
Stability:	Shelf life: one year from despatch.
Gene Name:	interleukin 17B



[View online »](#)

Database Link: [Entrez Gene 27190 Human Q9UHF5](#)

Background: IL17B is a non disulfide-linked homodimer of two 161 amino acid polypeptide chains. It belongs to the IL17 family of structurally-related cytokines that share a highly conserved C-terminal region but differ from one another in their N-terminal regions and in their distinct biological roles. The six known members of this family, IL17A through IL17F, are secreted as homodimers. IL17B is expressed by T-cells and has been shown to stimulate release of TNF-alpha and IL-1beta from cells of the monocyte lineage.

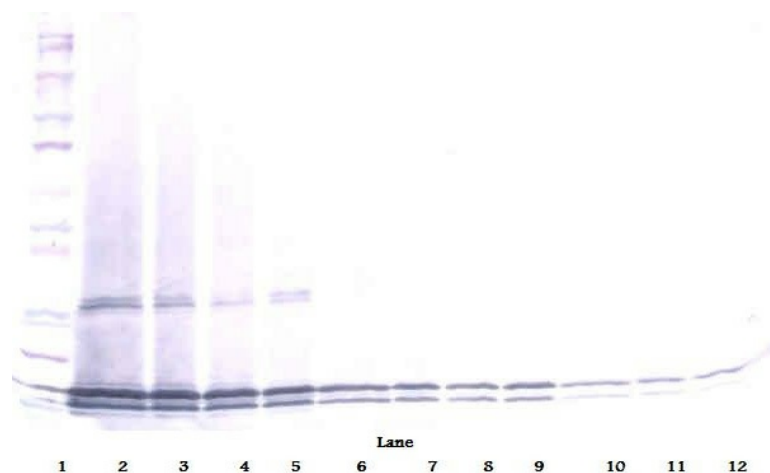
Synonyms: IL-17B, IL20, NIRF, ZCYTO7, Neuronal interleukin-17-related factor, Interleukin-20

Note: Centrifuge vial prior to opening.

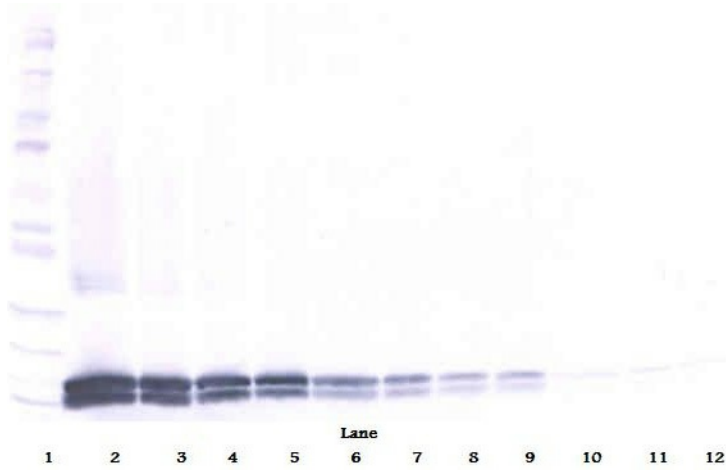
Protein Families: Druggable Genome, Secreted Protein

Protein Pathways: Cytokine-cytokine receptor interaction

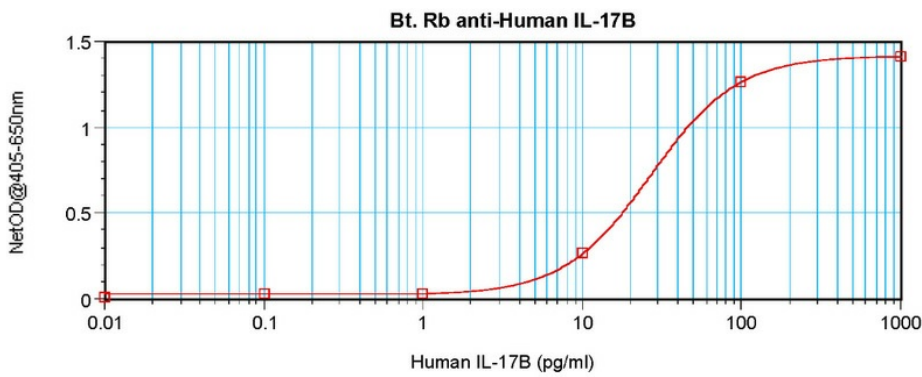
Product images:



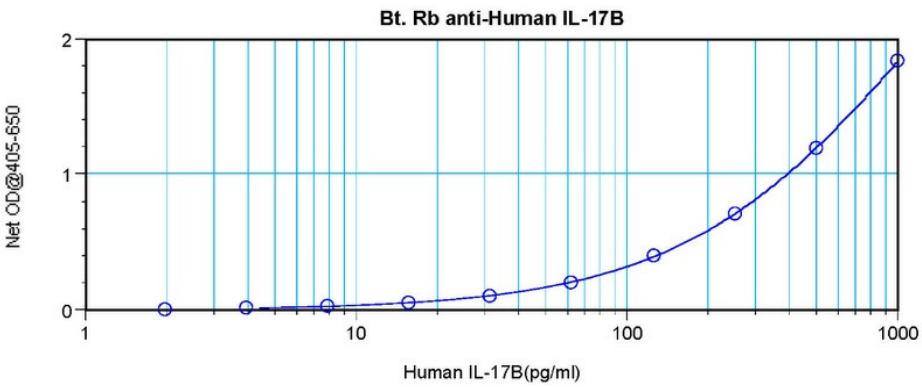
Western Blot (Unreduced) using Biotin conjugated anti-Interleukin-17B / IL17B Antibody Cat.-No AP01148BT



Western Blot (Reduced) using Biotin conjugated anti-Interleukin-17B / IL17B Antibody Cat.-No AP01148BT



Direct ELISA using Biotin conjugated anti-Interleukin-17B / IL17B Antibody Cat.-No AP01148BT



Sandwich ELISA using Biotin conjugated anti-Interleukin-17B / IL17B Antibody Cat.-No AP01148BT