

## Product datasheet for **AM50637PU-N**

### Alpha-actinin-1 / ACTN1 Mouse Monoclonal Antibody [Clone ID: AT1D10]

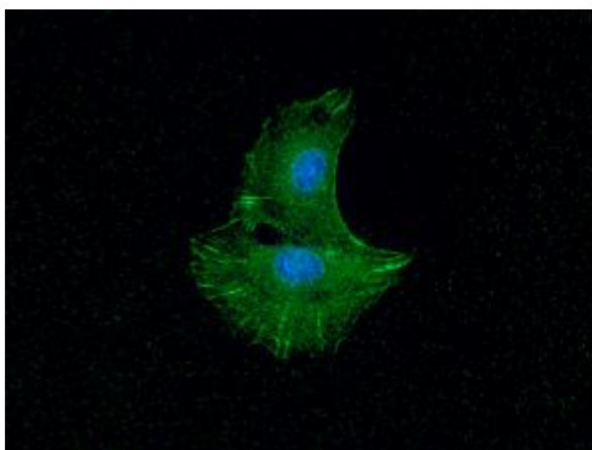
#### Product data:

Product Type:	Primary Antibodies
Clone Name:	AT1D10
Applications:	ELISA, FC, IF, WB
Recommended Dilution:	<b>ELISA.</b> <b>Western blot.</b> <b>Flow cytometry.</b> <b>Immunofluorescence.</b>
Reactivity:	Human
Host:	Mouse
Isotype:	IgG2a
Clonality:	Monoclonal
Immunogen:	Recombinant human ACTN1 (1-249aa) purified from E. coli.
Formulation:	Phosphate-Buffered Saline (pH 7.4) with 0.02% Sodium Azide, 10% Glycerol. State: Purified State: Liquid purified Ig fraction
Concentration:	lot specific
Purification:	Protein-A affinity chromatography
Conjugation:	Unconjugated
Storage:	Store undiluted at 2-8°C for one month or (in aliquots) at -20°C for longer. Avoid repeated freezing and thawing.
Stability:	Shelf life: one year from despatch.
Gene Name:	actinin alpha 1
Database Link:	<a href="#">Entrez Gene 87 Human P12814</a>
Background:	ACTN1 also known as Actinin, alpha 1. ACTN1 functions as an actin-binding-protein. ACTN1 determines the motility of keratinocytes by regulating the organization of the actin cytoskeleton, focal adhesion, and hemidesmosome proteins complexes, thereby modulating cell speed, lamellipodial dynamics, and directed migration.

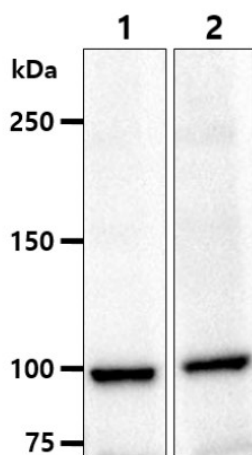


[View online »](#)

<b>Synonyms:</b>	Alpha actinin cytoskeletal isoform, Non-muscle alpha-actinin 1
<b>Protein Families:</b>	Druggable Genome, ES Cell Differentiation/IPS
<b>Protein Pathways:</b>	Adherens junction, Arrhythmogenic right ventricular cardiomyopathy (ARVC), Focal adhesion, Leukocyte transendothelial migration, Regulation of actin cytoskeleton, Systemic lupus erythematosus, Tight junction

**Product images:**

**Immunofluorescence:** ICC/IF analysis of ACTN1 in Balb-3T3 cells. The cell was stained with AM50637PU (1:100). The secondary antibody (green) was used Alexa Fluor 488. DAPI was stained the cell nucleus (blue).



**Western Blot Analysis:** The cell lysates (40ug) were resolved by SDS-PAGE, transferred to PVDF membrane and probed with anti-human ACTN1 antibody (1:1000). Proteins were visualized using a goat anti-mouse secondary antibody conjugated to HRP and an ECL detection system. Lane 1. : PC-3 cell lysate Lane 2. : A549 cell lysate