

Product datasheet for **AM50278PU-T**

hCG (CGA) Mouse Monoclonal Antibody [Clone ID: HCGa/53]

Product data:

Product Type:	Primary Antibodies
Clone Name:	HCGa/53
Applications:	IHC, WB
Recommended Dilution:	ELISA: Use BSA free Antibody for coating. Western Blotting: 0.5-1 µg/ml. Immunohistochemistry on Formalin-Fixed Paraffin Sections: 0.5-1 µg/ml for 30 minutes at RT. Staining of formalin-fixed tissues requires boiling tissue sections in 10mM citrate buffer, pH 6.0, for 10-20 min followed by cooling at RT for 20 minutes. Positive Control: Placenta.
Reactivity:	Human
Host:	Mouse
Isotype:	IgG1
Clonality:	Monoclonal
Immunogen:	Recombinant hCG alpha protein.
Specificity:	This MAb reacts with a protein of ~13kDa, identified as alpha sub-unit of HCG. HCG is a glycoprotein, which is secreted in large quantities by normal trophoblasts. It is present only in trace amounts in non-pregnant urine and sera but rises sharply during pregnancy. HCG is composed of two non-identical, non-covalently linked polypeptide chains designated as the α and β subunits. The α subunit is identical to that of thyroid stimulating hormone (TSH), follicle stimulating hormone (FSH), and luteinizing hormone (LH). Cellular Localization: Cytoplasmic, secreted.
Formulation:	10mM PBS State: Purified State: Liquid purified IgG fraction from Bioreactor Concentrate Stabilizer: 0.05% BSA Preservative: 0.05% Sodium Azide
Concentration:	lot specific
Purification:	Proten A/G Chromatography

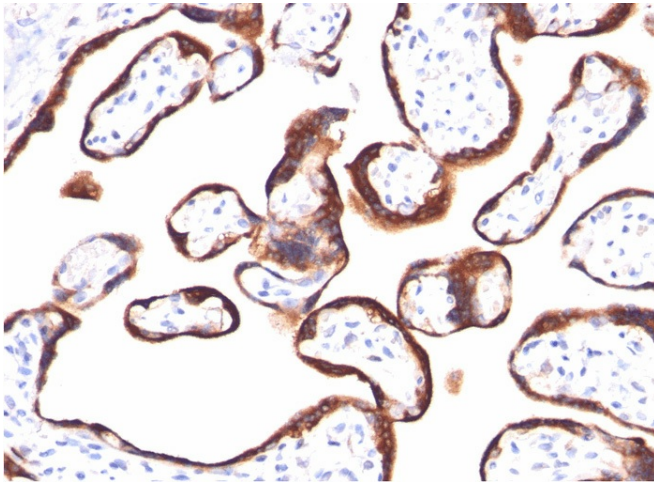


[View online »](#)

Conjugation:	Unconjugated
Storage:	Store undiluted at 2-8°C.
Stability:	Shelf life: one year from despatch.
Predicted Protein Size:	~13 kDa
Gene Name:	glycoprotein hormones, alpha polypeptide
Database Link:	Entrez Gene 1081 Human P01215

Background:	HCG is a glycoprotein, which is secreted in large quantities by normal trophoblasts. It is present only in trace amounts in non-pregnant urine and sera but rises sharply during pregnancy. HCG is composed of two non-identical, non-covalently linked polypeptide chains designated as the α and β subunits. The α subunit is identical to that of thyroid stimulating hormone (TSH), follicle stimulating hormone (FSH), and luteinizing hormone (LH).
Synonyms:	Follitropin alpha chain, Follicle-stimulating hormone alpha chain, FSH-alpha, Lutropin alpha chain, Luteinizing hormone alpha chain, LSH-alpha, LH alpha, Thyrotropin alpha chain, Thyroid-stimulating hormone alpha chain, TSH-alpha, Choriogonadotropin alpha chain, Chorionic gonadotrophin subunit alpha, hCG-alpha

Product images:



Formalin-Fixed, Paraffin-Embedded Human placenta stained with hCG alpha Antibody (Clone HCGa/53). Note specific membrane staining.