

Product datasheet for **AM50111PU-S**

Fibronectin (FN1) Mouse Monoclonal Antibody [Clone ID: SPM539]

Product data:

Product Type:	Primary Antibodies
Clone Name:	SPM539
Applications:	FC, IF, IHC
Recommended Dilution:	Flow Cytometry: 0.5-1 µg/10 ⁶ cells. Immunofluorescence: 0.5-1 µg/ml. Immunohistochemistry on Formalin-Fixed Paraffin Sections: 0.5-1 µg/ml for 30 minutes at RT. Staining of formalin-fixed tissues requires boiling tissue sections in 10mM Citrate buffer, pH 6.0, for 10-20 min followed by cooling at RT for 20 minutes. Positive Control: SW156 cells or Kidney.
Reactivity:	Human
Host:	Mouse
Isotype:	IgG1
Clonality:	Monoclonal
Immunogen:	Human fibronectin purified from serum by affinity chromatography on gelatin-sepharose.
Specificity:	This MAb is directed against the peptide core and reacts with both the plasma and cellular forms of fibronectin. It blocks the fibronectin-mediated cell attachment not by disrupting the collagen-fibronectin interaction, but by interfering with the attachment of fibronectin to its receptor on the cell surface. Cellular Localization: Connective tissue matrix.
Formulation:	10mM PBS State: Purified State: Liquid purified IgG fraction from Bioreactor Concentrate Stabilizer: 0.05% BSA Preservative: 0.05% Sodium Azide
Concentration:	lot specific
Purification:	Protein A/G Chromatography
Conjugation:	Unconjugated
Storage:	Store undiluted at 2-8°C.



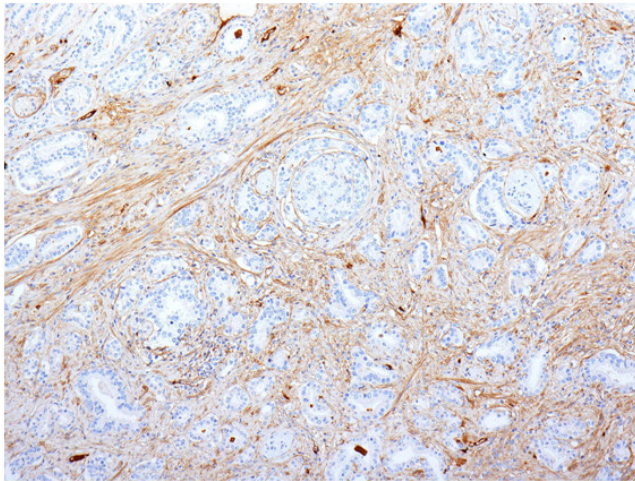
[View online »](#)

Stability:	Shelf life: one year from despatch.
Predicted Protein Size:	220 kDa (monomer); 440 kDa (dimer)
Gene Name:	fibronectin 1
Database Link:	Entrez Gene 2335 Human P02751

Background: Fibronectin is an extracellular matrix glycoprotein present on most cell surfaces, in extracellular fluids and in plasma. A high molecular weight heterodimeric protein, it was originally discovered as a protein missing from the surfaces of virus-transformed cells, and it has been shown to be involved in various functions including cell adhesion, cell motility and wound healing. Alternative splicing and glycosylation give rise to several different forms of Fibronectin, some of which exhibit restricted tissue distribution or association with malignancies. It has been shown that Myofibroblast phenotype formation correlates with the occurrence of glycosylated Fibronectin and Fibronectin splice variants in Dupuytren's disease. Fibronectin is a dimeric glycoprotein of 440kDa, which is present in cells, extracellular matrix, and blood. It possesses at least four binding sites for collagen, glycosaminoglycans, transglutaminase, and a cell surface receptor. Fibronectin is involved in cell adhesion, tissue organization, and wound healing.

Synonyms: FN1, Cold-insoluble globulin, CIG

Product images:



Formalin-fixed, paraffin-embedded Human Pancreatic Adenocarcinoma stained with Fibronectin Monoclonal Antibody (Clone SPM539).