

Product datasheet for **AM33412PU-N**

PD1 (PDCD1) Mouse Monoclonal Antibody [Clone ID: 7C9]

Product data:

Product Type:	Primary Antibodies
Clone Name:	7C9
Applications:	ELISA, WB
Recommended Dilution:	Indirect ELISA. Western Blot.
Reactivity:	Human
Host:	Mouse
Isotype:	IgG1
Clonality:	Monoclonal
Immunogen:	40kDa recombinant Human Programmed Cell Death-1 (PD-1).
Specificity:	Reactive with recombinant Human Programmed Cell Death-1 (PD-1). Reactivity with natural PD-1 has not been evaluated.
Formulation:	0.01M PBS, pH 7.2 without preservatives State: Aff - Purified State: Lyophilized purified IgG fraction
Reconstitution Method:	Restore with Double distilled water to adjust the final concentration to 1.0 mg/ml.
Purification:	Affinity Chromatography on Protein G
Conjugation:	Unconjugated
Storage:	Store lyophilized at 2-8°C for 6 months or at -20°C long term. After reconstitution store the antibody undiluted at 2-8°C for one month or (in aliquots) at -20°C long term. Avoid repeated freezing and thawing.
Stability:	Shelf life: one year from despatch.
Gene Name:	programmed cell death 1
Database Link:	Entrez Gene 5133 Human Q15116



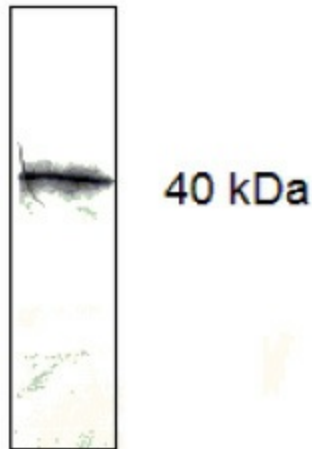
[View online »](#)

Background:

Programmed Cell Death-1 (PD-1), also called CD279, is a 288 amino acid cell surface protein that belongs to the immunoglobulin superfamily. The protein is expressed on T cells, B cells and macrophages. When PD-1 is joined with its ligand (CD274 or B7-H1), the immune cell's activation and effector function are attenuated. Research suggested that PD1 pathway is mainly involved with attenuation at periphery sites while the B7/CTLA-4 pathway is primarily involved with the attenuation of the activation of immune cells in secondary lymphoid organs. PD-1 pathway is implicated with cancer's immune-evasion, autoimmunity, and *Listeria monocytogenes* infection.

Synonyms:

Protein PD-1, hPD-1, PDCD1

Product images:

Western blot analysis showing 1 ug/well of recombinant Human PD-1 detected with 1 ug/ml of CD279 / PD1 Antibody (Clone 7C9).