

## Product datasheet for **AM32448PU-N**

### CD34 Mouse Monoclonal Antibody [Clone ID: EQ-8D11-C1]

#### Product data:

Product Type:	Primary Antibodies
Clone Name:	EQ-8D11-C1
Applications:	ELISA, FC, IF, WB
Recommended Dilution:	<b>Flow Cytometry:</b> 1.2 µg/10 <sup>6</sup> cells. <b>Immunofluorescence:</b> 1 µg/10 <sup>6</sup> cells. <b>Cell based ELISA</b> with intact, transiently transfected cells: 1/200-1/400.
Reactivity:	Sheep
Host:	Mouse
Isotype:	IgG2a
Clonality:	Monoclonal
Immunogen:	Genetic immunisation with cDNA encoding the extracellular domain of Ovine CD34
Specificity:	This antibody recognizes Ovine CD34. Based on recognition of the complete native protein expressed on transfected mammalian cells. Other species not tested. Cellular Localization: Membrane.
Formulation:	PBS, pH 7.2 State: Purified State: Liquid purified Ig fraction Preservative: None
Concentration:	lot specific
Purification:	Affinity Chromatography on Protein G
Conjugation:	Unconjugated
Storage:	Store undiluted at 2-8°C for one month or (in aliquots) at -20°C for longer. Avoid repeated freezing and thawing.
Stability:	Shelf life: one year from despatch.



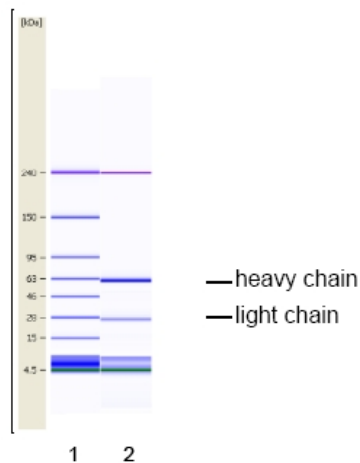
[View online »](#)

**Background:**

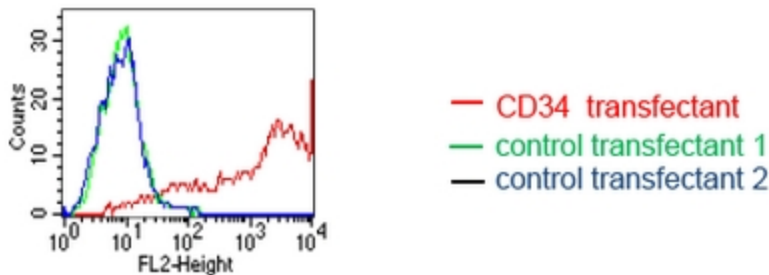
CD34 is a type I membrane protein with an apparent MW of approximately 115 kDa. It is a putative adhesion molecule with a role in early hematopoiesis by mediating the attachment of stem cells to the bone marrow extracellular matrix or directly to stromal cells. CD34 is expressed specifically on immature normal human marrow cells, including hematopoietic progenitor cells (2). It is thought to act as a scaffold for the attachment of lineage specific glycans, allowing stem cells to bind to lectins expressed by stromal cells or other marrow components.

**Synonyms:**

Hematopoietic progenitor cell marker

**Product images:**


CGE analysis of EQ-8D11-C1: AM32448PU-N CD34 antibody was purified by Protein G Affinity Chromatography from cell culture supernatants and verified by CGE. CGE analysis of purified EQ-8D11-C1 monoclonal antibody. Lane 1: molecular weight marker, Lane 2: 2



FACS analysis of BOSC23 cells using EQ-8D11-C1 Cat.No AM32448PU-N. BOSC23 cells were transiently transfected with an expression vector encoding either CD34 (red curve) or an irrelevant protein (control transfectant: blue and green curves). Binding of EQ-8D