

Product datasheet for **AM31946PU-N**

CCN3 (NOV) Mouse Monoclonal Antibody [Clone ID: 2G8]

Product data:

Product Type:	Primary Antibodies
Clone Name:	2G8
Applications:	ELISA, IHC, IP, WB
Recommended Dilution:	ELISA. Immunohistochemistry on Paraffin Sections: 5 µg/ml. Immunoprecipitation. Western Blot.
Reactivity:	Human
Host:	Mouse
Isotype:	IgG2a
Clonality:	Monoclonal
Immunogen:	Recombinant protein
Specificity:	This antibody recognizes Human NOV / CCN3.
Formulation:	PBS, pH 7.2 State: Purified State: Liquid purified Ig fraction
Concentration:	lot specific
Purification:	Protein A Chromatography
Conjugation:	Unconjugated
Storage:	Store the antibody undiluted at 2-8°C for one month or (in aliquots) at -20°C for longer. Avoid repeated freezing and thawing.
Stability:	Shelf life: one year from despatch.
Gene Name:	nephroblastoma overexpressed
Database Link:	Entrez Gene 4856 Human P48745



[View online »](#)

Background:

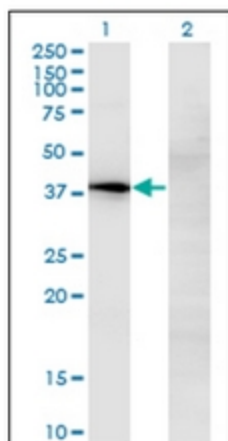
CCN3 is a cysteine-rich protein that is overexpressed in avian nephroblastomas. It is a member of the CCN family of proteins that includes CTGF. These proteins are encoded by a group of genes known as immediate-early genes, so named because they are expressed after induction by growth factors or certain oncogenes. The proteins share several common structural motifs: a consensus sequence present in IGF (insulin-like growth factor)-binding proteins (the IGFBP motif), an oligomeric complex-forming domain first identified in von Willebrand factor, a binding domain to soluble and matrix molecules and a dimerization (CT) domain. All CCN family members are thought to be involved in the control of cell proliferation.

Synonyms:

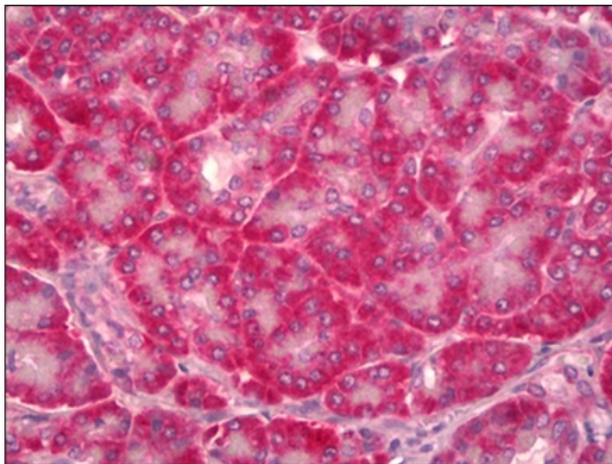
CCN3, IGFBP9, NOVH, NovH

Protein Families:

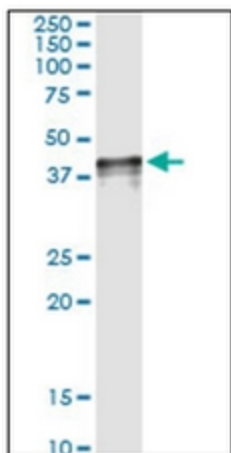
ES Cell Differentiation/IPS, Secreted Protein

Product images:

Western Blot analysis of NOV expression in transfected 293T cell line by NOV monoclonal antibody, clone 2G8.



Human Pancreas: Formalin-Fixed, Paraffin-Embedded (FFPE)



Immunoprecipitation of NOV transfected lysate using anti-NOV monoclonal antibody and Protein A magnetic bead, immunoblotted with NOV Rabbit Polyclonal antibody.