

Product datasheet for **AM31928PU-N**

Neuropeptide Y (NPY) (29-97) Mouse Monoclonal Antibody [Clone ID: 2C10]

Product data:

Product Type:	Primary Antibodies
Clone Name:	2C10
Applications:	ELISA, IHC, WB
Recommended Dilution:	ELISA. Immunohistochemistry on Paraffin Sections: 5 µg/ml. Western Blot: 1/500 - 1/1000.
Reactivity:	Human
Host:	Mouse
Isotype:	IgG1
Clonality:	Monoclonal
Immunogen:	Recombinant protein encoding amino acids 29-97 of human NPY
Specificity:	This antibody recognizes Human NPY / Neuropeptide Y at aa 29-97.
Formulation:	PBS, pH 7.2 State: Purified State: Liquid purified Ig fraction
Concentration:	lot specific
Purification:	Protein A Chromatography
Conjugation:	Unconjugated
Storage:	Store the antibody undiluted at 2-8°C for one month or (in aliquots) at -20°C for longer. Avoid repeated freezing and thawing.
Stability:	Shelf life: one year from despatch.
Gene Name:	neuropeptide Y
Database Link:	Entrez Gene 4852 Human P01303
Background:	Neuropeptide Y (NPY) is a peptide belonging to the PP-family and occurs in neurons and adrenal medullary cells. The brain contains large quantities of NPY and it is also found in the peripheral nervous system, where it coexists with noradrenaline in sympathetic fibers. NPY inhibits gut motility and causes vasoconstriction. Pheochromocytomas contain NPY.



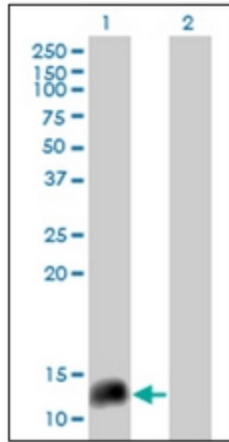
[View online »](#)

Synonyms: OTTHUMP00000201946; OTTHUMP00000201947; PYY4

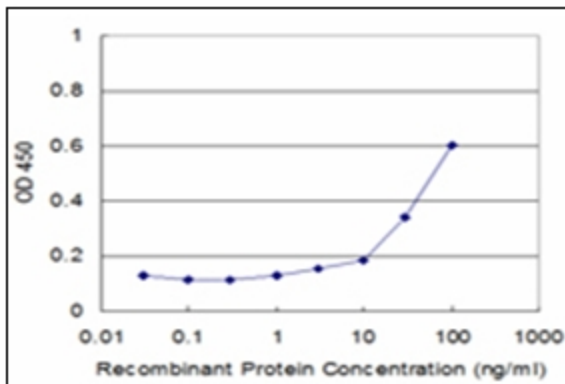
Protein Families: Druggable Genome, Secreted Protein, Transmembrane

Protein Pathways: Adipocytokine signaling pathway

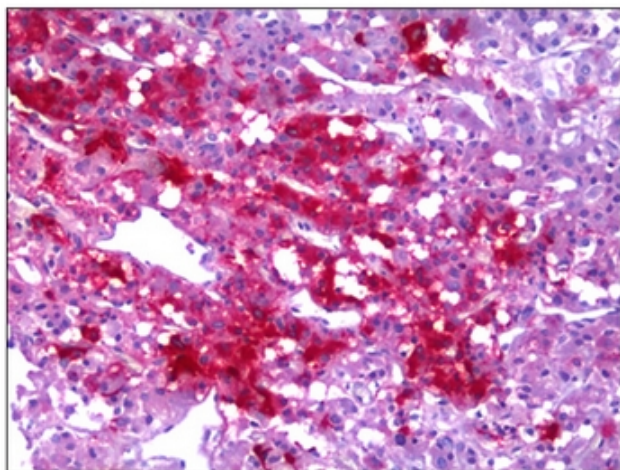
Product images:



Western Blot analysis of NPY expression in transfected 293T cell line by NPY monoclonal antibody, clone 2C10.



Detection limit for recombinant GST tagged NPY is approximately 3ng/ml as a capture antibody.



Human Adrenal Medulla: Formalin-Fixed, Paraffin-Embedded (FFPE)