

Product datasheet for **AM31242PU-N**

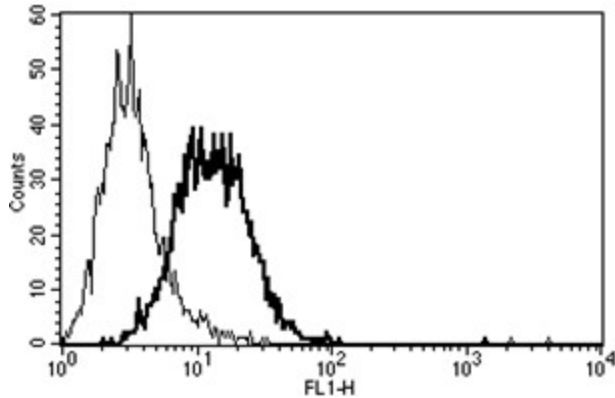
c Kit (KIT) Mouse Monoclonal Antibody [Clone ID: B-K15]

Product data:

Product Type:	Primary Antibodies
Clone Name:	B-K15
Applications:	FC
Recommended Dilution:	Flow Cytometry: Use 10 µl to label 10e6 cells or 100 µl of whole blood
Reactivity:	Human
Host:	Mouse
Isotype:	IgG1
Clonality:	Monoclonal
Immunogen:	Recombinant c-kit
Specificity:	This antibody recognises the Stem Cell Factor Receptor, SCF R, c-kit, a 145 kDa protein.
Formulation:	Phosphate-buffered saline containing 1 % BSA as stabilizer and 0.09 % sodium azide as preservative State: Purified State: Liquid purified Ig fraction
Purification:	Ion exchange chromatography
Conjugation:	Unconjugated
Storage:	Store the antibody undiluted at 2-8°C.
Stability:	Shelf life: one year from despatch.
Gene Name:	KIT proto-oncogene receptor tyrosine kinase
Database Link:	Entrez Gene 3815 Human P10721
Synonyms:	SCFR, KIT
Protein Families:	Adult stem cells, Druggable Genome, Embryonic stem cells, ES Cell Differentiation/IPS, Protein Kinase, Stem cell - Pluripotency, Transmembrane
Protein Pathways:	Acute myeloid leukemia, Cytokine-cytokine receptor interaction, Endocytosis, Hematopoietic cell lineage, Melanogenesis, Pathways in cancer



[View online »](#)

Product images:

A typical staining pattern with the B-K15 monoclonal antibody of TF1 cell line