

Product datasheet for **AM31131PU-N**

NEK2 (331-445) Mouse Monoclonal Antibody [Clone ID: 2F6]

Product data:

Product Type:	Primary Antibodies
Clone Name:	2F6
Applications:	ELISA, IHC, IP, WB
Recommended Dilution:	ELISA. Immunohistochemistry on Paraffin Sections: 5 µg/ml. Immunoprecipitation. Western Blot.
Reactivity:	Human
Host:	Mouse
Isotype:	IgG2a
Clonality:	Monoclonal
Immunogen:	NEK2 antibody was raised against NEK2 (AAH43502, 331 a.a. ~ 445 a.a) partial recombinant protein with GST tag.
Specificity:	This antibody recognizes Human NEK2 at aa 331-445.
Formulation:	PBS, pH 7.4 State: Purified State: Liquid purified Ig fraction
Concentration:	lot specific
Purification:	Affinity Chromatography on Protein A
Conjugation:	Unconjugated
Storage:	Store undiluted at 2-8°C for one month or (in aliquots) at -20°C for longer. Avoid repeated freezing and thawing.
Stability:	Shelf life: one year from despatch.
Gene Name:	NIMA related kinase 2
Database Link:	Entrez Gene 4751 Human P51955



[View online »](#)

Background:

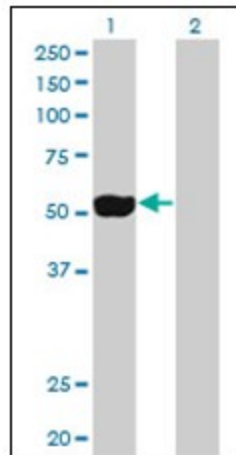
NEK2, also called serine/threonine-protein kinase Nek2NimA-related protein kinase 2, NimA-like protein kinase 1 and HSPK 21, is a protein kinase involved in mitotic regulation that may have a role at the G2-M transition and may also play a role in meiosis. NEK2 has a nuclear localization and accumulates throughout S phase and shows maximal levels in late G2. This expression pattern is highly reminiscent of that of A and B cyclins.

Synonyms:

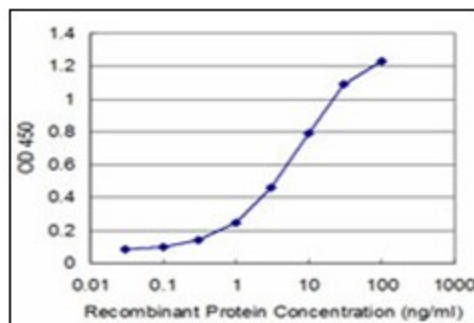
NLK1, NimA-related protein kinase 2, HSPK 21

Protein Families:

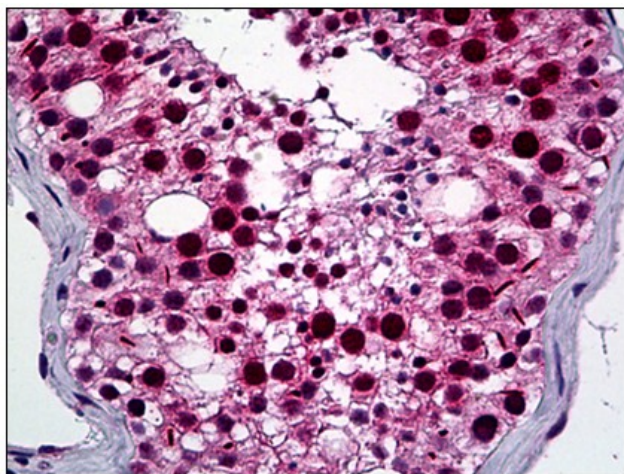
Druggable Genome, Protein Kinase

Product images:


Western Blot analysis of NEK2 expression in transfected 293T cell line by NEK2 monoclonal antibody clone 2F6.



Detection limit for recombinant GST tagged NEK2 is approximately 0.3ng/ml as a capture antibody.



Human Testis: Formalin-Fixed, Paraffin-Embedded (FFPE)