

Product datasheet for **AM31031PU-N**

SGK1 (1-91) Mouse Monoclonal Antibody [Clone ID: 3E3]

Product data:

Product Type:	Primary Antibodies
Clone Name:	3E3
Applications:	ELISA, IF, IHC, WB
Recommended Dilution:	ELISA. Immunofluorescence: 10 µg/ml. Immunohistochemistry on Paraffin Sections: 5 µg/ml. Western Blot.
Reactivity:	Human
Host:	Mouse
Isotype:	IgG2b
Clonality:	Monoclonal
Immunogen:	SGK (AAH01263, 1 a.a. ~ 91 a.a) partial recombinant protein with GST tag
Specificity:	This antibody reacts to Human SGK1 (aa 1-91).
Formulation:	PBS, pH 7.4 State: Purified State: Liquid purified Ig fraction
Concentration:	lot specific
Purification:	Protein A chromatography
Conjugation:	Unconjugated
Storage:	Store undiluted at 2-8°C for one month or (in aliquots) at -20°C for longer. Avoid repeated freezing and thawing.
Stability:	Shelf life: one year from despatch.
Gene Name:	serum/glucocorticoid regulated kinase 1
Database Link:	Entrez Gene 6446 Human O00141



[View online »](#)

Background:

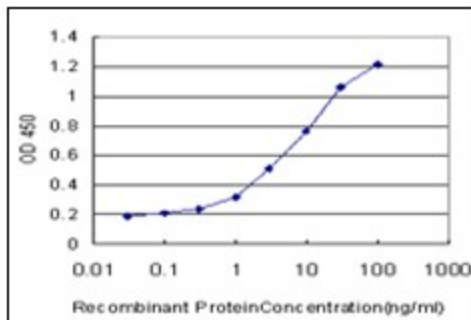
SGK, a SGK type protein kinase, is a multi-functional kinase that is phosphorylated and activated through a 3-phosphoinositide-dependent protein kinase 1 (PDK1) signaling pathway. The protein has been shown to activate certain potassium, sodium and chloride channels which function in cell survival, neuronal excitability and renal sodium excretion. SGK transcription can be stimulated by glucocorticoids, aldosterone, TGF-beta1, serum, increase of intracellular Ca²⁺ and phorbol esters, and can be downregulated by cAMP. At least 2 mRNA variants have been reported. The SGK1 gene has been mapped to chromosome 6q23, a region frequently affected by deletion in various human neoplasms, and has been shown to be upregulated in lung fibrosis, diabetic nephropathy and chronic viral hepatitis.

Synonyms:

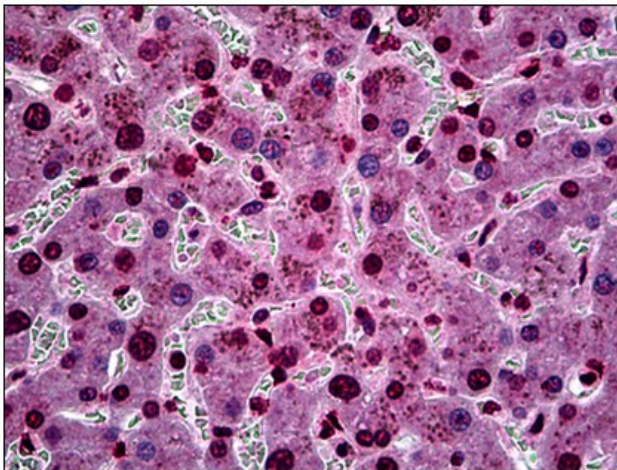
Serine/threonine-protein kinase Sgk1

Protein Families:

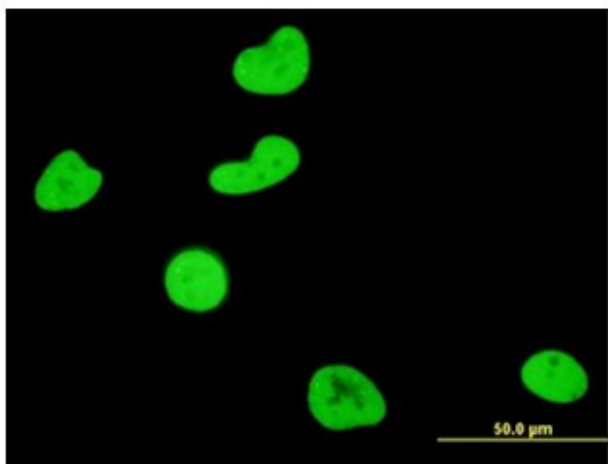
Druggable Genome, Protein Kinase

Product images:


Detection limit for recombinant GST tagged SGK is approximately 0.03ng/ml as a capture antibody.



Human Liver: Formalin-Fixed, Paraffin-Embedded (FFPE)



Immunofluorescence of monoclonal antibody to SGK1 on HeLa cell. [antibody concentration 10 ug/ml]