

Product datasheet for **AM26398PU-L**

alpha 1 Antitrypsin (SERPINA1) Mouse Monoclonal Antibody [Clone ID: 5G5]

Product data:

Product Type:	Primary Antibodies
Clone Name:	5G5
Applications:	ELISA, WB
Recommended Dilution:	Western blot: Detect α 1-antitrypsin (AAT) using antibody 5G5 at 1:5000 dilution (0.2 μ g/mL).
Reactivity:	Human
Host:	Mouse
Isotype:	IgG1
Clonality:	Monoclonal
Immunogen:	Human plasma derived α 1-antitrypsin
Specificity:	This antibody recognizes native α 1-antitrypsin.
Formulation:	0.01M PBS pH7.2 State: Aff - Purified State: Lyophilized Ig fraction
Reconstitution Method:	Double distilled water is recommended to adjust the final concentration to 1.00 mg/ml.
Purification:	Affinity Chromatography on Protein G
Conjugation:	Unconjugated
Storage:	Store lyophilized at 2-8°C for 6 months or at -20°C long term. After reconstitution store the antibody undiluted at 2-8°C for one month or (in aliquots) at -20°C long term. Avoid repeated freezing and thawing.
Stability:	Shelf life: one year from despatch.
Gene Name:	serpin family A member 1
Database Link:	Entrez Gene 5265 Human P01009



[View online »](#)

Background:

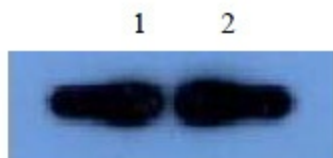
AAT, also known as SERPINA1; serpin peptidase inhibitor, clade A (alpha-1 antiproteinase, antitrypsin), member 1. It is secreted and is a serine protease inhibitor whose targets include elastase, plasmin, thrombin, trypsin, chymotrypsin, and plasminogen activator. Severe Serpin A1 deficiency leads to several clinical complications such as pulmonary emphysema, juvenile hepatitis, cirrhosis and hepatocellular carcinoma.

Synonyms:

SERPINA1, AAT

Product images:

Western blot - α 1-antitrypsin(α 1 AAT) antibody (5G5)



1&2 α 1-antitrypsin(α 1 AAT) 20ng/well

Detect α -antitrypsin (α AAT) using antibody 5G5 at 1:5000 dilution