

## Product datasheet for **AM26060BT-N**

### Cd4 Mouse Monoclonal Antibody [Clone ID: Rib5/2]

#### Product data:

Product Type:	Primary Antibodies
Clone Name:	Rib5/2
Applications:	FC, IHC
Recommended Dilution:	Immunohistochemistry on frozen sections: 0.5 µg/ml (1:800). Does not react on routinely processed paraffin sections. Has been described to work in FACS. Suggested positive control: Rat spleen.
Reactivity:	Rat
Host:	Mouse
Isotype:	IgG2a
Clonality:	Monoclonal
Immunogen:	Lymphoblasts
Specificity:	The antibody detects a 53kDa glycoprotein located on the cell surface. It is used for the identification of CD4 bearing cells, mainly T-helper / inducer lymphocytes. It can also be applied for in vivo blocking of CD4 mediated immunological reactions. <b>Antigen Distribution</b> <b>Isolated Cells:</b> T-lymphocytes and thymocytes, monocytes, macrophages. <b>Tissue Sections:</b> Rib 5/2 stains T-cell areas in the spleen and lymph nodes. In the thymus Rib 5/2 detects cortical and medullary thymocytes. It recognises tissue macrophages and Th-cells according to the CD4 distribution.
Formulation:	Stock solution contains 0.4 mg/ml IgG, phosphate buffered saline pH 7.2 (PBS), 5 mg/ml BSA as a stabilizer and 0.01% Kathon as a preservative. Label: Biotin State: Lyophilized purified Ig fraction
Reconstitution Method:	Restore by adding 0.5 ml distilled water.
Conjugation:	Biotin



[View online »](#)

**Storage:** Store lyophilized at 2-8°C for 6 months or at -20°C long term.  
 After reconstitution store the antibody undiluted at 2-8°C for one month or (in aliquots) at -20°C long term.  
 Avoid repeated freezing and thawing.

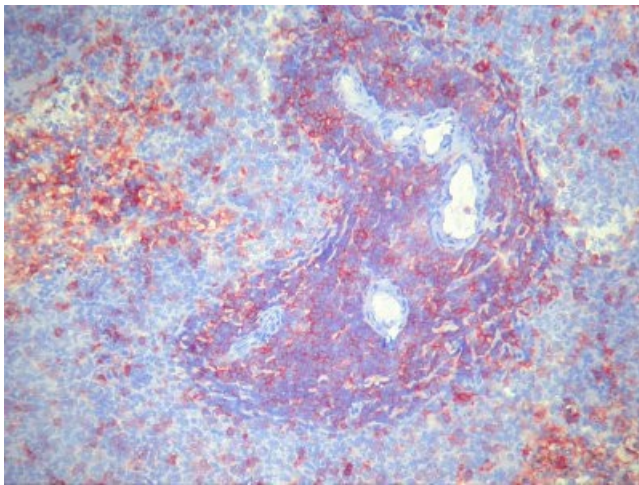
**Stability:** Shelf life: one year from despatch.

**Gene Name:** Cd4 molecule

**Database Link:** [Entrez Gene 24932 Rat P05540](#)

**Synonyms:** T-cell surface antigen T4/Leu-3

**Product images:**



Immunohistochemistry on frozen sections:  
 Staining with AM26060BT-N on rat spleen

Comparison of CD4 and CD8 Monoclonal antibodies performed by flow cytometry

Isolated cells from:	% Positive Cells			
	CD4		CD8	
	Rib 5/2	W3/25	Rib 6/1	Ox-8
Lymph node	46	43	16	16
Spleen	31	30	13	13
Peripheral blood	48	49	25	26

Courtesy of Dr. Lehmann, University of Rostock, Germany.