

Product datasheet for **AM26052BT-N**

CD3E Mouse Monoclonal Antibody [Clone ID: CRIS-7]

Product data:

Product Type:	Primary Antibodies
Clone Name:	CRIS-7
Applications:	FC, IHC
Recommended Dilution:	Immunohistochemistry on frozen sections: 0.5mg/ml (1:400). <i>Suggested positive control:</i> Human tonsil. Has been described to work in FACS. Does not react in Immunohistochemistry on paraffin fixes cells (epitope is not fixation resistant).
Reactivity:	Human, Monkey, Rhesus Monkey
Host:	Mouse
Isotype:	IgG2a
Clonality:	Monoclonal
Immunogen:	Stimulated human leukocytes
Specificity:	This antibody detects CD3 antigen on mature human T-cells.
Formulation:	Phosphate buffered saline pH 7.2 (PBS) Label: Biotin State: Lyophilized Ig fraction Stabilizer: 5 mg/ml bovine serum albumin (BSA) Preservative: 0.05% (v/v) Kathon CG
Reconstitution Method:	Reconstitute by adding 0.5ml distilled water.
Concentration:	0.2mg/ml (reconstituted)
Purification:	Affinity purified
Conjugation:	Biotin
Storage:	Store lyophilized at 2-8°C. After reconstitution store the antibody undiluted at -20°C. Avoid repeated freezing and thawing.
Stability:	Shelf life: one year from despatch.
Gene Name:	CD3e molecule



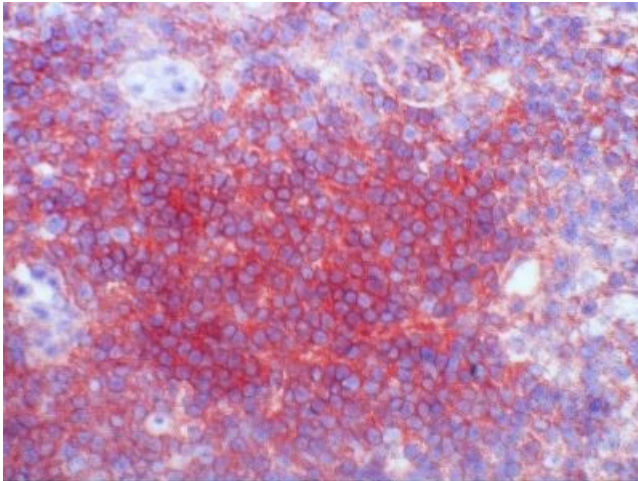
[View online »](#)

Database Link: [Entrez Gene 916 Human P07766](#)

Background: The CD3 antigen is a protein complex composed of four distinct chains (CD3 γ , CD3 δ and two CD3 ϵ) that associate with the T cell receptor (TCR) and the ζ -chain to generate an activation signal in T lymphocytes. The TCR, ζ -chain and CD3 molecules together comprise the TCR complex. The CD3 γ , CD3 δ and CD3 ϵ chains are highly related cell surface proteins of the immunoglobulin superfamily containing a single extracellular immunoglobulin domain.

Synonyms: T3/Leu-4

Product images:



: human tonsil, frozen section.