

Product datasheet for **AM26025PU-N**

Human IgG (Fc heavy chain specific) Mouse Monoclonal Antibody [Clone ID: EM-07]

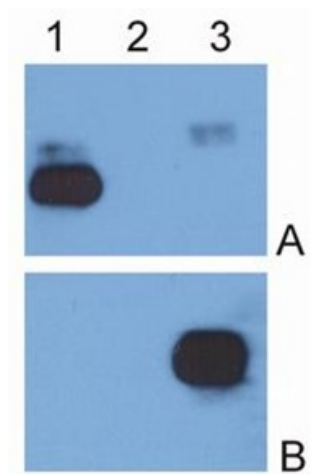
Product data:

Product Type:	Secondary Antibodies
Product Name:	Human IgG (Fc heavy chain specific) Mouse Monoclonal Antibody [Clone ID: EM-07]
Clone Name:	EM-07
Applications:	ELISA, FC, IF, WB
Recommended Dilution:	Immunocytochemistry. Western Blotting: The Peroxidase conjugate of this antibody is suitable for detection of Human IgG Fc fragments. The antibody EM-07 does not crossreact with IgM. Flow cytometry: 1-4 µg/ml. ELISA: The Peroxidase conjugate of this antibody is suitable for detection of Human IgG Fc fragments by ELISA. The antibody EM-07 does not crossreact with IgM.
Reactivity:	Human
Host:	Mouse
Immunogen:	Fusion protein of human IgG Fc fragment
Isotype:	IgG1
Formulation:	PBS, pH~7.4 State: Aff - Purified State: Liquid purified Ig fraction from Hybridoma Culture Supernatant (> 95% pure by SDS-PAGE) Preservative: 15 mM Sodium Azide
Concentration:	lot specific
Purification:	Affinity Chromatography on Protein A
Conjugation:	Unconjugated
Storage:	Store undiluted at 2-8°C. DO NOT FREEZE!



[View online »](#)

Product images:



IgG κ light chain (1), IgG λ light chain (2) and IgG Fc fragment (3) purified from human serum were analysed by Western blotting with MEM-09 antibody against IgG κ light chain (A) and EM-07 antibody against IgG Fc fragment (B).