

## Product datasheet for **AM20951PU-N**

### Talin 1 (TLN1) Mouse Monoclonal Antibody [Clone ID: 5C1]

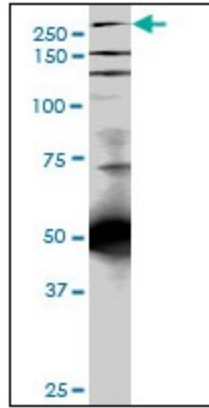
#### Product data:

|                       |   |
|-----------------------|---|
| Product Type:         | Primary Antibodies  |
| Clone Name:           | 5C1   |
| Applications:         | ELISA, IHC, WB  |
| Recommended Dilution: | <b>ELISA.</b><br><b>Immunohistochemistry on Paraffin Sections:</b> 5 µg/ml.<br><b>Western Blot</b>  |
| Reactivity:           | Human, Mouse, Rat   |
| Host:                 | Mouse   |
| Isotype:              | IgG3  |
| Clonality:            | Monoclonal  |
| Immunogen:            | Recombinant protein, TLN1 (NP_006280, 1052 a.a. ~ 1150 a.a) partial recombinant protein with GST tag. MW of the GST tag alone is 26 KDa.        |
| Specificity:          | This antibody reacts to Talin 1 (TLN1).   |
| Formulation:          | PBS, pH 7.2<br>State: Liquid purified Ig fraction   |
| Purification:         | Protein A Chromatography  |
| Conjugation:          | Unconjugated  |
| Storage:              | Store the antibody at -20°C.<br>Avoid repeated freezing and thawing.  |
| Stability:            | Shelf life: one year from despatch.   |
| Gene Name:            | talin 1   |
| Database Link:        | <a href="#">Entrez Gene 21894 Mouse</a> <a href="#">Entrez Gene 313494 Rat</a> <a href="#">Entrez Gene 7094 Human</a><br><a href="#">Q9Y490</a> |
| Synonyms:             | KIAA1027, TLN   |
| Protein Families:     | Druggable Genome  |
| Protein Pathways:     | Focal adhesion  |

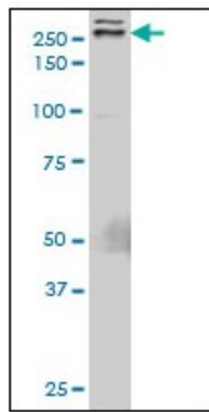


[View online »](#)

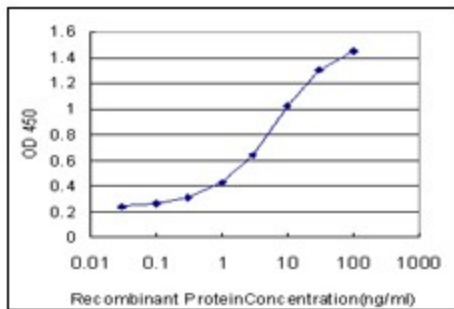
Product images:



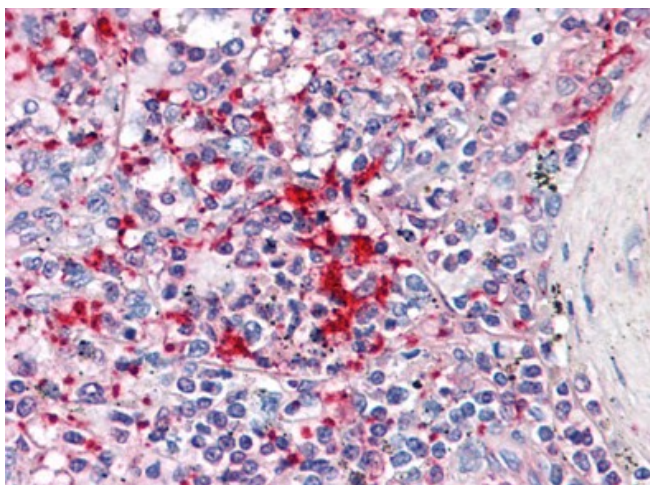
TLN1 monoclonal antibody clone 5C1. Western Blot analysis of TLN1 expression in PC-12.



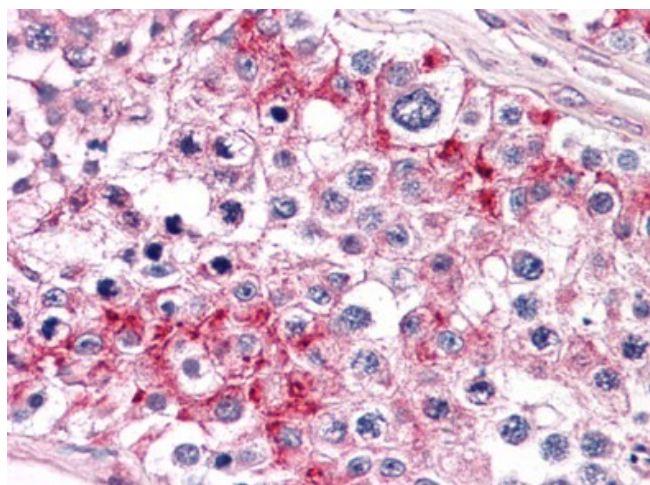
TLN1 monoclonal antibody clone 5C1. Western Blot analysis of TLN1 expression in Raw 264.7.



Detection limit for recombinant GST tagged TLN1 is approximately 0.03 ng/ml as a capture antibody.



Human Spleen: Formalin-Fixed, Paraffin-Embedded (FFPE)



Human Spleen: Formalin-Fixed, Paraffin-Embedded (FFPE)