

Product datasheet for **AM20943PU-N**

SOX9 Mouse Monoclonal Antibody [Clone ID: 3C10]

Product data:

Product Type:	Primary Antibodies
Clone Name:	3C10
Applications:	ELISA, IF, IHC, WB
Recommended Dilution:	ELISA. Immunofluorescence: 10 µg/ml. Immunohistochemistry on Paraffin Sections: 5 µg/ml. Western Blot.
Reactivity:	Human
Host:	Mouse
Isotype:	IgG2a
Clonality:	Monoclonal
Immunogen:	Recombinant protein, SOX9 (NP_000337, 400 a.a. ~ 510 a.a) partial recombinant protein with GST tag. MW of the GST tag alone is 26 KDa.
Specificity:	This antibody detects SRY (sex Determining Region Y)-box 9 (SOX9).
Formulation:	PBS, pH 7.2 State: Purified State: Liquid purified Ig fraction
Concentration:	lot specific
Purification:	Protein A Chromatography
Conjugation:	Unconjugated
Storage:	Store the antibody (in aliquots) at -20°C. Avoid repeated freezing and thawing.
Stability:	Shelf life: one year from despatch.
Gene Name:	SRY-box 9
Database Link:	Entrez Gene 6662 Human P48436



[View online »](#)

Background:

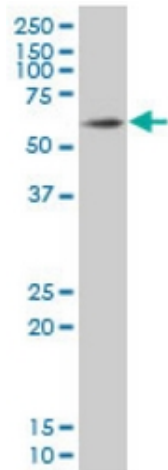
SOX9 is a member of the family of SOX (Sry-type high mobility group box) genes that were first identified on the basis of region with high homology to that of Sry (Sex determining region Y). SOX9 is a transcription factor with a high mobility group DNA-binding domain that is expressed in all prechondrocytic and chondrocytic cells during embryonic development in a pattern that close parallels that of the gene for type II collagen. SOX9 is important in neural crest formation, and is involved in regulating subsequent epithelial-mesenchymal transition and migration.

Synonyms:

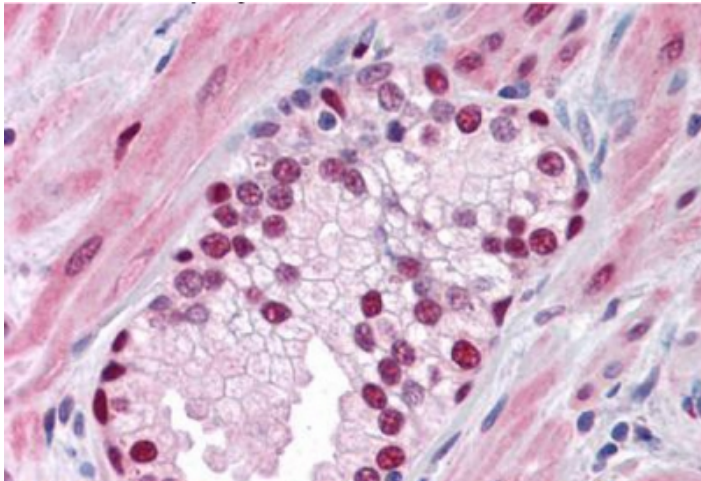
Transcription factor SOX-9, SRY-box 9, SRA1, CMD1, CMPD1

Protein Families:

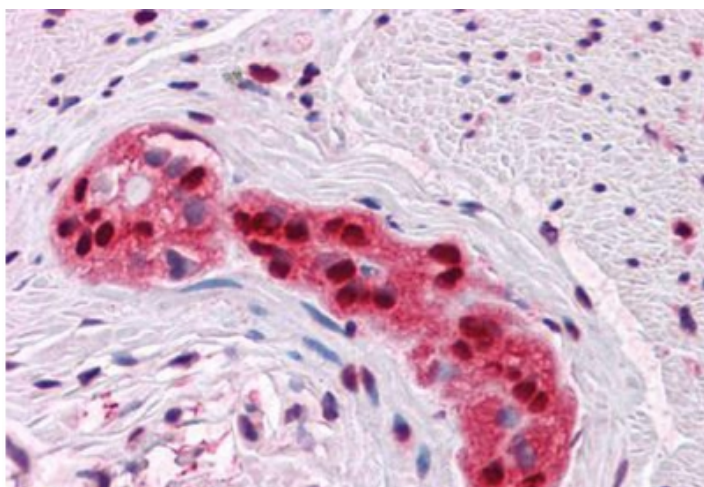
Adult stem cells, Druggable Genome, Embryonic stem cells, ES Cell Differentiation/IPS, Induced pluripotent stem cells, Transcription Factors

Product images:

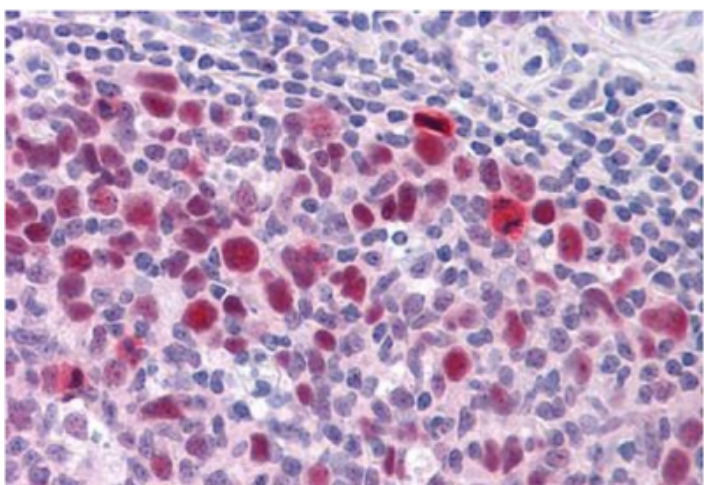
Western Blot analysis of SOX9 expression in HepG2 using SOX9 antibody



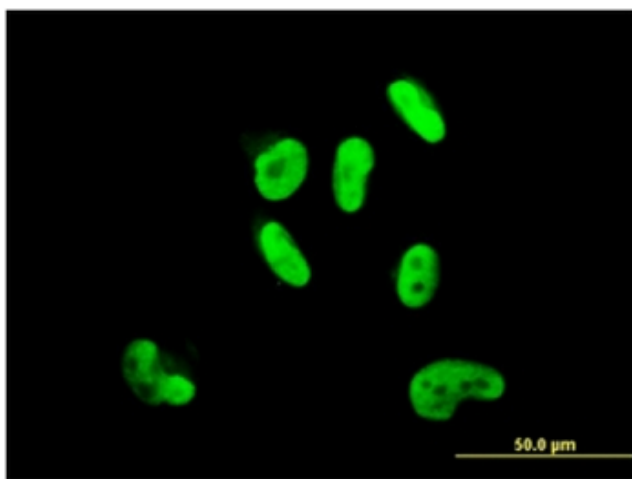
Formalin -Fixed, Paraffin-Embedded Human Prostate stained with SOX9 antibody



Formalin -Fixed, Paraffin-Embedded Human Colon, myenteric plexus stained with SOX9 antibody



Formalin -Fixed, Paraffin-Embedded Human Tonsil stained with SOX9 antibody



Immunofluorescence of SOX9 antibody on HepG2 cell at 10 ug/ml