

Product datasheet for **AM20925PU-N**

PAX7 (411-521) Mouse Monoclonal Antibody [Clone ID: 1E12]

Product data:

Product Type:	Primary Antibodies
Clone Name:	1E12
Applications:	ELISA, IHC, WB
Recommended Dilution:	ELISA. Immunohistochemistry on Paraffin Sections: 5 µg/ml. Western Blot.
Reactivity:	Human, Mouse
Host:	Mouse
Isotype:	IgG2a
Clonality:	Monoclonal
Immunogen:	PAX7 (NP_002575, 411 a.a. ~ 521 a.a) partial recombinant protein with GST tag.
Specificity:	This antibody reacts to Paired Box Containing Transcription Factor Pax7 (PAX7) at aa 411-521.
Formulation:	PBS, pH 7.4 State: Purified State: Liquid purified Ig fraction
Concentration:	lot specific
Purification:	Protein A Chromatography
Conjugation:	Unconjugated
Storage:	Upon receipt, store the antibody (in aliquotes) at -20°C. Avoid repeated freezing and thawing.
Stability:	Shelf life: one year from despatch.
Gene Name:	paired box 7
Database Link:	Entrez Gene 18509 Mouse Entrez Gene 5081 Human P23759



[View online »](#)

Background:

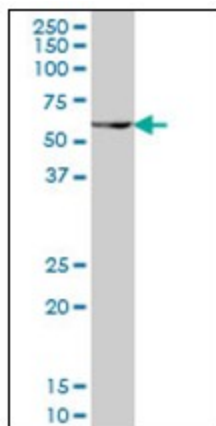
This gene is a member of the paired box (PAX) family of transcription factors. Members of this gene family typically contain a paired box domain, an octapeptide, and a paired-type homeodomain. These genes play critical roles during fetal development and cancer growth. The specific function of the paired box gene 7 is unknown but speculated to involve tumor suppression since fusion of this gene with a forkhead domain family member has been associated with alveolar rhabdomyosarcoma. Alternative splicing in this gene has produced two known products but the biological significance of the variants is unknown.

Synonyms:

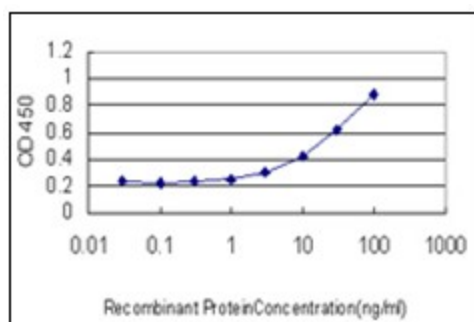
Pax-7, HUP1

Protein Families:

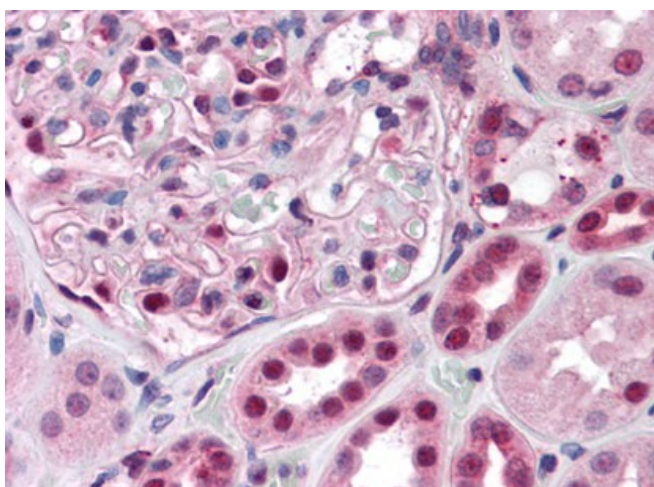
Adult stem cells, Druggable Genome, Embryonic stem cells, ES Cell Differentiation/IPS, Transcription Factors

Product images:

PAX7 monoclonal antibody clone 1E12 Western Blot analysis of PAX7 expression in NIH/3T3.



Detection limit for recombinant GST tagged PAX7 is approximately 3 ng/ml as a capture antibody.



Human Kidney: Formalin-Fixed, Paraffin-Embedded (FFPE)